



*Grupo* **Brisa** 

# Biodiversity Report 2025

March 2026

# About this report

The Brisa Biodiversity Report 2025 presents the progress achieved by the Brisa Group in implementing its Biodiversity Strategy — Brisa Nature Positive 2030 — during the 2025 financial year, ensuring the continuity of the organisation's commitment to the conservation, protection and regeneration of the natural capital associated with its activities.

This report follows on from the Brisa Biodiversity Report 2024 and constitutes the second formal reporting cycle under the Brisa Nature Positive Strategy 2030. The present document reflects the progress made in the implementation of the Action Plan to Biodiversity, the consolidation of monitoring mechanisms, and the progressive integration of biodiversity into the organisation's operational processes.

The report also incorporates methodological updates resulting from the addendum to the Brisa Nature Positive Strategy, developed in 2025, which introduced a revised and consolidated version of the Impact KPI and the Implementation KPI, as well as an update to the biodiversity baseline. These revisions have strengthened the methodological robustness of the indicators and improved the alignment between the instruments of monitoring and to ensure greater consistency in the assessment of Brisa's performance over time.

The main objectives of this report are to present Brisa's approach and progress in implementing the Brisa Nature Positive Strategy 2030, including the actions carried out under the Biodiversity Action Plan.

The Brisa Group publishes this Biodiversity Report with the aim of transparently informing its stakeholders of its commitment, evolution and contribution to generating a positive impact on biodiversity, as well as supporting its progressive integration into the management of its activities.

## **Contacts**

Further information or clarification can be requested at: [contato@brisa.pt](mailto:contato@brisa.pt).

This Report sets out the Brisa Group's commitment to integrating biodiversity considerations into its operations, describing the management approach adopted for the ecosystems associated with Brisa Concessão Rodoviária (BCR) and the actions implemented under the Biodiversity Action Plan. These include initiatives focused on the protection, conservation and restoration of biodiversity and ecosystems, capacity-building activities, and participation in initiatives aimed at enhancing natural capital.

Through this Biodiversity Report, the Brisa Group transparently informs its stakeholders of its progress and performance in managing its impacts on biodiversity, in alignment with the ambition defined in the Vision28 strategic plan, the Group Environmental Policy, and the commitments undertaken under the act4nature Portugal initiative, thereby reinforcing its contribution to biodiversity protection and to the generation of a positive impact on Nature.



# 01

## Strategy and commitments for biodiversity

Brisa Nature Positive Strategy: implementation and consolidation  
Ambition and commitments

# 02

## Action for biodiversity

Actions in 2025

# 03

## Annexes

- I. Glossary
- II. List of observed and potentially impacted species
- III. Implementation of act4nature Portugal commitments

# Biodiversity at Brisa – key indicators

**8 020 ha** **Total area** occupied by the highways managed by BCR

**4 163 ha** Approximately 52% of the total area occupied by the highways corresponds to **natural or semi-natural areas**

**6%** The natural and semi-natural areas on the highways managed by BCR are part of the **National System of Protected Area**

**16%** The natural and semi-natural areas on the BCR highways are **High Natural Value Areas**

**34** **Natural habitats** with potential occurrence within the natural and semi-natural areas of the BCR highways. 26% are priority habitats.

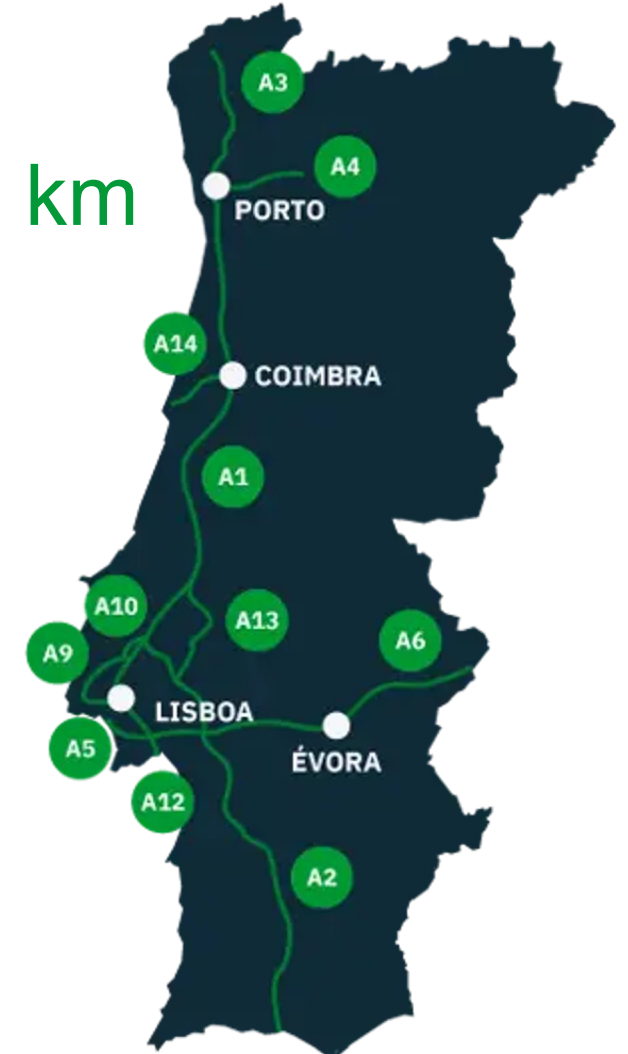
**62%** **The 5 km segments** of the BCR highways have **3 or more crossings per km**, which allow for **fauna permeability**.

**1 129** Wildlife roadkill incidents, of which 14% involved wild species with a conservation status of Vulnerable (VU), Endangered (EN) or Critically Endangered (CR)\*.

**4,2%** Of the natural and semi-natural areas along the BCR highways **are occupied by invasive plant species**.

**1 100 km**

Conceded to BCR



\*See Annex II

# 01

## Strategy and commitments for biodiversity

Brisa Nature Positive Strategy:  
implementation and consolidation

Ambition and commitments



# Strategy and commitments for biodiversity

## Brisa Nature Positive Strategy: implementation and consolidation

The Brisa Nature Positive Strategy 2030 establishes the strategic framework for integrating biodiversity into the management of the Brisa Group's activities, in particular those of Brisa Concessão Rodoviária (BCR). This Strategy defines the principles, objectives and instruments guiding the organisation's approach to managing the interactions between highway infrastructure and natural ecosystems, promoting a structured approach aligned with best practices in conservation and natural capital management.

The strategy is based on the characterisation of the biodiversity baseline and on the definition of a Biodiversity Action Plan, which identifies the measures aimed at avoiding and reducing impacts, promoting ecological restoration, and enhancing the habitats and species present in the areas under Brisa's management.

Since its completion in 2023, the Brisa Group has been developing and consolidating the technical and operational instruments required for its implementation, including a monitoring system based on key performance indicators, namely the Impact KPI<sup>1</sup> and the Implementation KPI<sup>2</sup>, which enable the tracking of progress of the actions and the assessment of changes in the natural capital associated with its infrastructure.

This process has been accompanied by the progressive integration of biodiversity into the organisation's operational

processes and procedures, contributing to ensuring a consistent and structured management approach and supporting the implementation of the actions planned through to 2030.

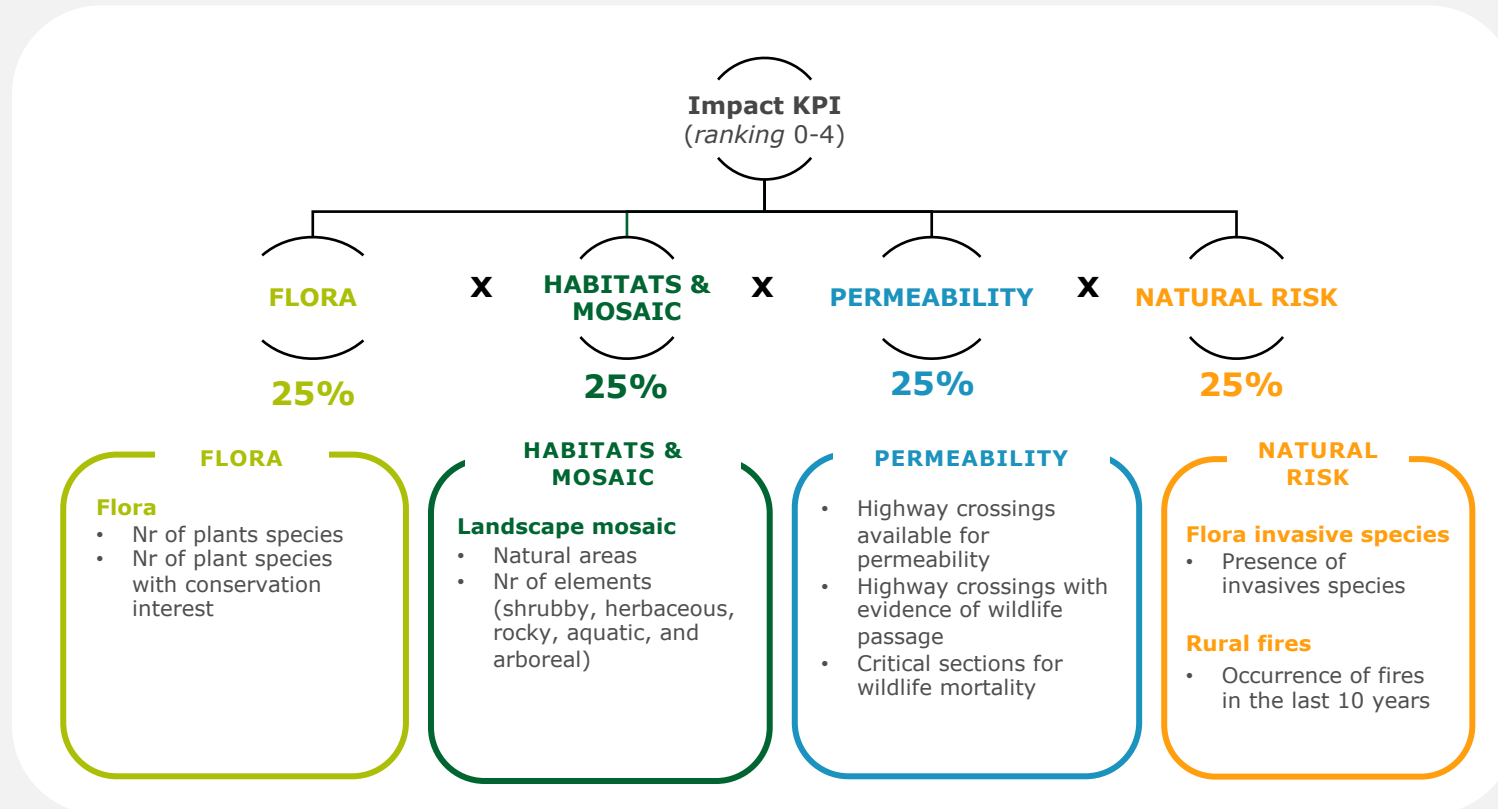


---

<sup>1</sup> Referred to as the Biodiversity KPI in the [Brisa Biodiversity Report 2024](#).

<sup>2</sup> Referred to as the Action KPI in the [Brisa Biodiversity Report 2024](#).

# Impact KPI<sup>1</sup>



The **Impact KPI**, developed to characterize the baseline and enable the measurement of performance or impact on biodiversity, assigns a ranking value from 0 (low) to 4 (high) to each 5 segment, as well as to each of the indicators that comprise it.

To facilitate the management of biodiversity and ecosystems along the BCR highways, 5 km highway segments were defined as the management units.

In this way, the Impact KPI indicators and other biodiversity and ecosystem indicators assessed under the Brisa Nature Positive 2030 Strategy, namely for the identification of High Natural Value Areas (HNVA), were calculated for each 5 km segment.

<sup>1</sup> Referred to as the Biodiversity KPI in the [Brisa Biodiversity Report 2024](#).

# Implementation KPI<sup>2</sup>

	Flora	Fauna (permeability)	Habitats	Natural Risk
<b>Level 0</b>	<ul style="list-style-type: none"> <li>No actions</li> </ul>	<ul style="list-style-type: none"> <li>No actions</li> </ul>	<ul style="list-style-type: none"> <li>No actions</li> </ul>	<ul style="list-style-type: none"> <li>No actions</li> </ul>
<b>Level 1</b>	<ul style="list-style-type: none"> <li>1% to 10% of 5 km segments with actions to achieve a presence of more than 50% of native plants and selective vegetation control</li> <li>Annual selective vegetation control plan (including GIS)</li> <li>Team training</li> <li>Best Practices Manual</li> </ul>	<ul style="list-style-type: none"> <li>1-5% of 5 km segments, with compliance with actions defined for permeability</li> <li>Annual action plan to increase permeability and collect evidence</li> <li>Annual plan for systematic data collection and annual report on wildlife mortality</li> <li>Team training</li> </ul>	<ul style="list-style-type: none"> <li>2 half-areas of service with eco-landscaping</li> <li>0,1% to 1% of the access nodes areas with restored habitats</li> <li>1% to 3% of the restored areas with protected habitats present</li> <li>Annual plan of eco-landscaping</li> <li>Suppliers training</li> <li>Eco-landscaping manual</li> </ul>	<ul style="list-style-type: none"> <li>1% to 10% of 5 km segments with invasive plant control</li> <li>1 to 50% of 5 km segments with burned natural areas undergoing post-fire restoration</li> <li>Annual invasive plant control and post-fire restoration plan (including GIS mapping)</li> <li>Team training</li> </ul>
<b>Level 2</b>	<ul style="list-style-type: none"> <li>10% to 25% of the 5 km segments with actions aimed at achieving more than 50% native plant presence and selective vegetation control.</li> </ul>	<ul style="list-style-type: none"> <li>5-10% of 5 km segments, complying with the actions defined for permeability</li> </ul>	<ul style="list-style-type: none"> <li>4 service half-areas with eco-landscaping</li> <li>1% to 2% of access node area with restored habitats</li> <li>3% to 6% of restored areas with classified habitats present</li> </ul>	<ul style="list-style-type: none"> <li>10% to 25% of 5 km segments with invasive plant control</li> <li>50% to 70% of 5 km segments with burned natural areas undergoing post-fire restoration actions</li> </ul>
<b>Level 3</b>	<ul style="list-style-type: none"> <li>25% to 50% of 5 km segments with actions to achieve a presence of more than 50% of native plants and selective vegetation control</li> </ul>	<ul style="list-style-type: none"> <li>10-25% of 5 km segments, complying with the actions defined for permeability</li> </ul>	<ul style="list-style-type: none"> <li>6 half-areas of service with eco-landscaping</li> <li>2% to 5% of access node area with restored habitats</li> <li>6% to 10% of restored areas with protected habitats present</li> </ul>	<ul style="list-style-type: none"> <li>25% to 50% of 5 km segments with invasive plant control</li> <li>70% to 90% of 5 km segments with burned natural areas undergoing post-fire restoration actions</li> </ul>
<b>Level 4</b>	<ul style="list-style-type: none"> <li>50% of 5 km segments with actions to achieve a presence of more than 50% of native plants and selective vegetation control</li> </ul>	<ul style="list-style-type: none"> <li>25% of 5 km segments, complying with the actions defined for permeability</li> </ul>	<ul style="list-style-type: none"> <li>50% of service half-areas with eco-landscaping</li> <li>5% of access node area with restored habitats</li> <li>10% of restored areas with protected habitats present</li> </ul>	<ul style="list-style-type: none"> <li>50% of 5 km segments with invasive plant control</li> <li>90% to 100% of 5 km segments with burned natural areas undergoing post-fire restoration actions</li> </ul>

## What is it for?

To set the ambition for 2030 and monitor the annual implementation actions.

## What are the defined targets?

Achieve Level 3 in HNVA or PA or HNVA+PA, and Level 1 in the remaining natural or semi-natural areas (no-HNVA and no-PA) forming part of the highways, by 2028.

## How often is it monitored?

Before the actions, and after 12 and 18 months to assess implementation, and again 3 to 5 years later to evaluate the impact on biodiversity.

**Legend:** HNVA – High Natural Value Areas | PA – Protected Areas | GIS – Geographic Information System

<sup>2</sup> Referred to as the Action KPI in the [Brisa Biodiversity Report 2024](#).

Non-HNVA areas and no-AP 2028

HNVA or PA or HNVA+PA 2028

# Strategy and commitments for biodiversity

## Ambition and commitments

Within the framework of the Brisa Nature Positive Strategy 2030, the Brisa Group has defined specific targets for the progressive implementation of biodiversity actions, with particular focus on areas of greater ecological relevance. In particular, the Group has established the **objective of achieving level 3 of the Implementation KPI in High Nature Value Areas (HNVA) and in Protected Areas designated for nature conservation by 2028**, relative to the 2022 baseline, **and level 1 in the remaining natural and semi-natural areas** associated with the highways under the management of Brisa Concessão Rodoviária.

At the end of 2023, the Brisa Group reinforced this commitment by joining the act4nature Portugal initiative, under which it undertook voluntary commitments to integrate biodiversity into its strategy and operations, implement the defined actions, build capacity among employees and service providers, and regularly monitor and report on the progress achieved.

These commitments contribute to ensuring the structured implementation of the Brisa Nature Positive Strategy 2030 and reinforce the Brisa Group's contribution to the conservation and enhancement of biodiversity and to generating a positive impact on Nature by 2030.



By joining the act4nature Portugal initiative, the Brisa Group committed to integrating nature into its strategy and business model, implementing measures for the conservation of biological diversity, its restoration, the sustainable use of natural resources, and the fair and equitable sharing of the benefits arising from such use.

Information regarding the Brisa Group's participation in act4nature Portugal is available at:

[www.brisa.pt/pt/sustentabilidade/compromisso/act4nature-portugal/](http://www.brisa.pt/pt/sustentabilidade/compromisso/act4nature-portugal/)

In addition, the implementation of the act4nature Portugal commitments is presented in Annex III to this Report.

# 02

## Action for biodiversity

Actions in 2025



# Action for biodiversity

## Actions in 2025

The year 2025 corresponded to the second year of implementation of the actions set out in the Biodiversity Action Plan forming part of the Brisa Nature Positive Strategy 2030. During this period, actions foreseen in the 2024 and 2025 Operational Plans were implemented, while continuing the refinement of methodologies for data collection (for validation of the baseline), service procurement and on-site implementation of actions, incorporating biodiversity-compatible requirements.

In this context, under the 2025 Biodiversity Operational Plan, actions were undertaken to validate the baseline and to prepare future interventions at the scale of 5 km highway segments.

These actions enabled the characterisation of indicators relating to flora, fauna, habitats, landscape mosaic and natural risks, contributing to the consolidation of the biodiversity baseline and to the definition of priority interventions.

### Flora, habitats, landscape mosaic and natural risks

In the domain of flora, habitats and natural risks, the following activities were carried out:

- validation of the ecological baseline of the identified segments (**Table 1**);
- definition of proposed interventions aimed at improving the ecological condition of the areas associated with the highways, including:
  - selective vegetation control;
  - promotion of native species;
  - control of invasive alien species;
  - management and restoration of areas affected by rural wildfires;
- georeferenced inventory of invasive plant species along the entire BCR network, in both directions, covering a total of 2,200 km (**Figure 1**). This survey enabled the establishment of the baseline for these species, constituting a fundamental reference for the assessment of the Impact KPI;

# Action for biodiversity

## Actions in 2025

- preparation of the **Good Practice Manual for the Management of Biodiversity and Ecosystems** along the BCR highways (including guidelines for eco-landscaping in service areas and other green areas).



- approximately **9 509 flora species records** were shared on the Flora-On portal, contributing to scientific knowledge of the biodiversity associated with highway infrastructure.



**Figure 1** – Mapping of invasive plant species across the BCR network, by species and area of occurrence per highway.

# Action for biodiversity

## Actions in 2025

### Fauna

The actions undertaken included:

- validation of the ecological baseline, with a focus on fauna permeability;
- definition of intervention projects aimed at improving ecological connectivity;
- monitoring of wildlife crossing structures through camera trapping, enabling the characterisation of reference conditions and supporting the future assessment of the effectiveness of the measures implemented.

Additionally, the following capacity-building and knowledge enhancement actions were carried out:

- review and update of the **Fauna Identification Manual**;
- raining of operational teams, with a view to improving the recording and identification of roadkill incidents.

These actions contribute to improving the roadkill recording system and, consequently, to enhancing knowledge of wildlife

mortality patterns and supporting the definition of mitigation measures.



# Action for biodiversity

## Actions in 2025

**Table 1** - Areas (5 km highway segments) for baseline validation of fauna, flora, habitats, landscape mosaic and risk indicators under the 2025 Operational Plan.

Aspects under assessment	Highway	5 km Segment	Area of the 5 km Segment (ha)	Location within HNVA and/or overlap with a Protected Area designated for Nature Conservation
Fauna (permeability)	A1	47	8,9	Ramsar Site of Pateira de Fermentelos and Águeda and Cértima river valley; SAC/SPA Ria de Aveiro
		72	11,2	Ramsar Site of Pateira de Fermentelos and Águeda and Cértima river valley; SAC/SPA Ria de Aveiro
	A2	43	12,9	HNVA and Caldeirão SAC/SPA
		44	9,7	HNVA
		52	9,8	HNVA and Caldeirão SAC/SPA
		51	6,4	HNVA
		36	8,8	Castro Verde Biosphere Reserve; Piçarras SPA
		59	8,6	Castro Verde Biosphere Reserve; Piçarras SPA
		37	7,5	Piçarras SPA
		58	7,8	Piçarras SPA
Flora, Habitats & Landscape Mosaic and Natural Risks (invasive species and rural wildfires)	A1	40	21,5	HNVA
		79	12,1	HNVA
	A2	11	11,0	HNVA and Sado Estuary SAC
		13	11,3	n.a.
		82	11,4	n.a.
		84	16,2	HNVA and Sado Estuary SAC
	A6	1	7,2	n.a.
	A14	8	10,7	HNVA

**Legend:** HNVA – High Natural Value Areas | SAC - Special Area of Conservation | SPA - Special Protection Area

# Action for biodiversity

## Actions in 2025



Habitat 4030 (European dry heaths)

Wild thyme (*Thymus capitellatus*)

Habitat 9330 (Cork oak woodland)

Strawberry tree (*Arbutus unedo*)

**Figure 2** - Examples of habitats and flora species observed along the analysed highways



Common genet (*Genetta genetta*)

Egyptian mongoose (*Herpestes ichneumon*)

European badger (*Meles meles*)

Red fox (*Vulpes vulpes*)

**Figure 3** - Examples of species recorded through camera trapping in 2025, in highway crossing structures.

## Flora & Habitats

### Under the **Operational Plan 2025**:

- Most of the analysed segment areas comprise more than 90% natural or semi-natural land, within which **16 different habitats were identified, three of which are classified as priority habitats under the Habitats Directive** (Annex B-I of Decree-Law No. 140/99 of 24 April, as amended by Decree-Law No. 49/2005 of 24 February).
- **A total of 322 flora species** were observed along highway verges.
- **54 flora species (16.8%) are of conservation interest\***. Notable species include sticky rockrose (*Halimium umbellatum* var. *verticillatum*), wild thyme (*Thymus capitellatus*), Sado gorse (*Ulex australis* subsp. *welwitschianus*) and kermes oak (*Quercus coccifera* subsp. *rivas-martinezii*).
- As in 2024, when compared with the floristic records of the [Flora-On](#) portal, it was found that the survey carried out led to a significant increase in floristic knowledge of these regions, with 283 species observed distributed across five 10x10 km UTM grids, where there were previously no records of these species.

## Fauna

### Under the **Operational Plan 2025**:

- most evidence of fauna permeability was observed at underpasses and viaducts, with mammals being the most frequently recorded group;
- the indicators — available crossings, crossings with evidence of wildlife presence, and number of critical mortality sections — showed positive performance in the assessed 5 km segments, with high-ranking values (3–4) on a scale from 0 to 4, reflecting good availability and functionality of the existing highway crossing structures and no occurrence of critical wildlife mortality sections.

Across the entire BCR network, **covering a total of 2,200 km** and considering both directions, the following were recorded:

- **1 129 wildlife roadkill incidents, of which:**
  - approximately **16%** occurred within **Protected Areas designated for Nature Conservation and/or High Nature Value Areas (HNVA)**, including **23 species** with conservation status and legal protection in Portugal;
  - approximately **14%** involved **wild species with a conservation status of Vulnerable (VU), Endangered (EN) or Critically Endangered (CR)\***.

\* In accordance with the International Union for Conservation of Nature (IUCN), the Red Book of Portuguese Vertebrates, the Red List of Birds of Mainland Portugal and the Red Book of Mammals of Mainland Portugal, and with legal protection status (as listed in the annexes to the Habitats Directive and/or the Birds Directive).

# Action for biodiversity

## Actions in 2025

Additionally, in parallel, on-site actions foreseen in the 2024 and 2025 Operational Plans were implemented, including:

- selective vegetation management and the promotion of conditions favourable to habitat development;
- control of invasive alien species;
- fuel management and interventions in areas affected by rural wildfires;
- reinforcement of ecological permeability, namely through the strengthening of fencing.

These interventions covered different highways within the BCR network, including High Nature Value Areas (HNVA) and other natural and semi-natural areas associated with the infrastructure, and involved:

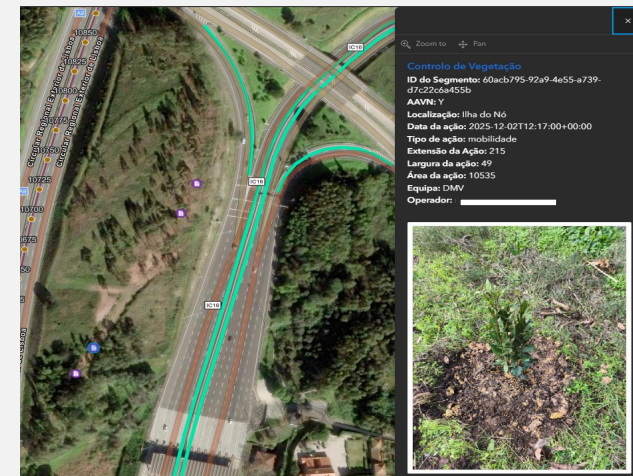
- approximately **16.1 hectares of treated area**, including actions targeting flora, habitats, invasive species and areas affected by wildfires, as well as follow-up interventions under the Nó da Pontinha Pilot Project (A9-CREL);
- **reinforcement of approximately 2,200 metres of fencing**, with the installation of fine mesh fencing, folded in an “L” shape at ground level and subsequently covered with soil, in order to prevent animal passage and strengthen fauna protection and ecological connectivity.

The actions implemented are presented in **Table 2**.

**The Nó da Pontinha Ecological Restoration Pilot Project (A9-CREL)**, developed in 2023, covered a total area of 8.6 hectares, classified as a High Nature Value Area (HNVA) under the Brisa Nature Positive Strategy 2030, and is located in the municipality of Amadora, in the Lisbon district.

Following on from the interventions carried out in 2024, the following on-site operations were undertaken in 2025:

- Selective clearing, including the protection of features and areas containing RELAPE species;
- Control of invasive species;
- Replacement planting of trees and shrubs;
- Monitoring and population reinforcement of native flora species.



**Figure 4** - Marking of planting locations at Pontinha Node (A9-CREL)

# Action for biodiversity

## Actions in 2025

**Table 2** – On-site actions implemented in 2025, by highway and type of intervention.

Highway	Actions - Flora and Habitats				Actions - Fauna (Permeability)		Actions – Invasive species		Actions – Fires		Total	
	Planting (ha)		Removal of vegetation (ha)		Reinforcement of fences (m)		Invasive species control (ha)		Fuel management (ha)			
	HNVA	Other areas	HNVA	Other areas	HNVA	Other areas	HNVA	Other areas	HNVA	Other areas	Extension of reinforced fences (m)	Area of intervention (flora, habitats, invasive species, burned areas) (ha)
A1 - Auto-Estrada do Norte				1,2				4,2		2,8	0	8,2
A2 - Auto-Estrada do Sul					270						270	0
A3 - Auto-Estrada Porto/Valença							0,1	2,3			0	2,4
A4 - Auto-Estrada Porto/Amarante							0,9	1,1			0	2
A5 - Auto-Estrada da Costa do Estoril		0,5					0,3	0			0	0,9
A6 - Auto-Estrada Marateca-Caia					800	1130					1930	0
A9 – CREL (Nó da Pontinha)	1,1						0,1				0	1,1
A14 - Auto-Estrada Figueira da Foz-Coimbra (Norte)							0,4	1,1			0	1,5
<b>Total</b>	<b>1,1</b>	<b>0,5</b>	<b>0</b>	<b>1,2</b>	<b>1070</b>	<b>1130</b>	<b>1,9</b>	<b>8,7</b>	<b>0</b>	<b>2,8</b>	<b>2200</b>	<b>16,1</b>

HNVA – High Nature Value Area

# Actions for biodiversity

## Actions in 2025 – Partnership initiatives

### Protocol for the rehabilitation of Pateira de Fermentelos

In August 2024, the Brisa Group entered into a protocol agreement with Quercus – National Association for Nature Conservation, which remained in force in 2025, with the aim of supporting, under a corporate sponsorship framework, the development of the “Entre Margens” project. This project seeks to rehabilitate and enhance Pateira de Fermentelos, the largest natural lagoon in the Iberian Peninsula, located adjacent to the A1 highway, a wetland of high biological diversity and significant natural value..

### Miyawaki forest planting at the Oeiras Service Area

The Miyawaki Mini Forest at the Oeiras Service Area (A5), in the Cascais–Lisbon direction, was established in 2024 through a partnership between the Brisa Group, Capgemini, Colégio da Torre and Ilhas de Biodiversidade. The project involved volunteers in the initial planting phase and, in 2025, once again brought together members of the community for maintenance activities, including the removal of invasive species and the planting of additional trees, thereby strengthening the forest’s growth and biodiversity.

This initiative aims to generate a positive impact on urban biodiversity and to inspire the community to contribute to the creation of more sustainable cities.



# Action for biodiversity

## Actions in 2025 – Other initiatives

### Recovery of a pond at the Mealhada Operational Centre

In 2025, BCR assessed the feasibility of restoring a pond at the Mealhada Operational Centre, with the aim of creating an aquatic ecosystem that, despite its small size, would provide environmental benefits by serving as a habitat for amphibians, aquatic invertebrates, reptiles and rare plants adapted to still waters. In this regard, the restoration of this habitat will begin in 2026, consolidating a positive contribution to biodiversity.



Lake at the Mealhada Operational Centre

### Participation in the LIFE-2024-SAP-NATm application – Nature & Biodiversity – Standard Action Projects

In September 2025, the Brisa Group once again participated in the submission of an application for the LIFE-2024-SAP-NAT | Nature & Biodiversity funding opportunity - Standard Action Projects funding opportunity, in partnership with the University of Évora (coordinating entity for the application), the University of Coimbra, REN – Redes Energéticas Nacionais, E-REDES, NBI – Natural Business Intelligence, WWF – World Wildlife Fund, Associação Biopolis, and the Portuguese Society for the Study of Birds.

The project, called LIFE Green Link, has several objectives, such as:

- Create a biodiversity data platform for the selected areas
- Prevent and control invasive species through the use of specific management practices and the restoration of native vegetation
- Promote wildlife connectivity between both sides of the highways
- Promote the improvement of green infrastructure through the conservation of species and habitats
- Collaboration between infrastructure operators

# Action for biodiversity

## Actions in 2025 – Other initiatives

### **Nó de Carcavelos Plantations – A5 Estoril Coast Highway**

As a compensatory measure for the removal of pine trees during the installation of photovoltaic solar panels at Brisa's headquarters in Carcavelos, 70 native trees were planted at the Nó de Carcavelos of the A5 motorway, namely 50 stone pines and 20 olive trees.

Plantations of stone pine and olive trees in the Nó de Carcavelos



# 03

## Annexes

- I. Glossary
- II. List of observed and potentially impacted species
- III. Implementation of act4nature Portugal commitments



# Anexo I - Glossário

**High Natural Value Areas (HNVA)** – Areas not subject to legal protection but recognised for important features of habitat, biodiversity and ecosystem services by scientific experts. Areas of high natural value include: a) habitats that are likely to present high biodiversity, rare species and/or species of conservation interest; b) areas that are biodiversity hotspots and/or have confirmed records of rare species and species of conservation interest and c) areas that present valuable ecosystem services.

**Biodiversity** – The variability among living organisms from all sources, including all ecosystems and the ecological complexes of which they are part, this includes diversity within species, between species, and of ecosystems.

**Value chain** – The range of activities carried out by the company and by entities upstream and downstream from it, to bring the company's products or services from their conception to their end use. Entities upstream (e.g. suppliers) provide products or services that are used in the development of the company's own products or services. Entities downstream (e.g. distributors, customers) receive products or services from the company. The value chain includes the supply chain.

**Natural capital** – The elements of nature that directly or indirectly produce value for people, including ecosystems, species, freshwater, land, minerals, air and oceans, as well as natural processes and functions.

**Conservation** – The protection, improvement and sustainable use of natural resources for present and future generations.

**Dependencies** – Aspects of nature's contributions to people, that the company relies on to function. Examples of dependencies are: the ecosystems' ability to regulate water flow and water quality, the ecosystems' ability to regulate hazards, such as fires and floods, the ecosystems' ability to provide a suitable habitat for pollinators, and the ecosystems' ability to sequester carbon.

**Ecosystem** – A dynamic complex of plant, animal and microorganism communities and their non-living environment interacting as a functional unit.

# Anexo I - Glossário

**Invasive alien species** – Organisms (plants, animals, microorganisms, etc.) that are non-native to an ecosystem, which may cause economic or environmental harm or adversely affect human health and the health of the ecosystem. They have adverse impacts upon biodiversity, including decline or elimination of native species, through competition, predation or transmission of pathogens, and the disruption of local ecosystems and ecosystem functions. In the context of this report, the focus is on invasive plant species.

**RELAPE Species** – Portuguese acronym used for rare, endemic, localized, threatened or endangered species.

**Fauna** – The animal species of a particular region or habitat.

**Flora** – The plant species of a particular region or habitat.

**Habitat** – The area or type of environment in which an organism or population occurs, defined by the sum of the abiotic and biotic factors of the environment, whether natural or modified, which are essential to the life and reproduction of the species. Also used to mean the environmental attributes required by a particular species or its ecological niche. Also used as a synonym for 'ecosystem type.

**Hierarquia da mitigação** – Methodology hierarchy defined as:

- a) Avoidance – measures taken to avoid creating impacts from the outset, such as careful spatial or temporal placement of elements of infrastructure, in order to completely avoid impacts on certain components of biodiversity;
- b) Minimisation – measures taken to reduce the duration, intensity and/or extent of direct, indirect and cumulative impacts, that cannot be completely avoided, as far as is practically feasible;
- c) Rehabilitation/restoration – measures taken to rehabilitate degraded ecosystems or restore cleared ecosystems following exposure to impacts that cannot be completely avoided and/or minimised;
- d) Offset – measures taken to compensate for any adverse impacts that cannot be avoided, minimised and/or rehabilitated or restored, in order to achieve no net loss or a net gain of biodiversity.

# Anexo I - Glossário

**Impacts** – Negative or positive effects on environmental resources resulting from environmental changes. Changes in the environment's capacity to provide social and economic functions..

**Indicador** – Quantitative or qualitative descriptor generated with a well-defined method which reflects a phenomenon of interest. Indicators are frequently used to set environmental goals and evaluate their fulfilment.

**Nature positive** – According to the Nature Positive Initiative (2023) is a global societal goal defined as “Halting and reversing nature loss by 2030, relative to the 2020 baseline, and achieving full recovery by 2050”.

**Direct operations** – All activities, sites (e.g. buildings, forests, roads, farms), and vehicles over which the company has operational or financial control. This includes majority owned subsidiaries.

**Permeability** – Landscape permeability can be defined as the quality of a heterogeneous land area to provide for the passage of animals. Landscape permeability is a measure of the resistance to animal movement and the potential for animal passage across landscapes (Singleton et al., 2002).

In the context of this report, permeability refers to the degree to which the highway inhibits or allows animal movement.

**Risk** – The product of the probability of an occurrence and the magnitude of the damage.

**Ecosystem services** – The benefits people obtain from ecosystems. These include services such as food, water, timber and fibre; regulating services that affect climate, floods, disease, wastes and water quality; cultural services that provide recreational, aesthetic and spiritual benefits; and supporting services such as soil formation, photosynthesis and nutrient cycling.

**Nature-based solutions** – Living solutions inspired by, continuously supported by and using nature, which are designed to address various societal challenges in a resource-efficient and adaptable manner and to provide simultaneously economic, social, and environmental benefits.

# Annex II - Observed and potentially impacted species

The list of species observed and potentially impacted by Brisa's activities is updated annually based on biodiversity characterization information, based on data collected in the field at operation sites. The species recorded during the monitoring of highway passages and roadkill monitoring are presented with their conservation status at regional (Portugal's Red Lists<sup>1</sup>) and global (IUCN Red List) levels, when evaluated, and all species of flora and species of the following groups of fauna are considered: birds, mammals, reptiles, amphibians and invertebrates observed and/or identified by Environmental DNA. It includes information on the occurrence of the species in High Natural Value Areas (HNVA) and/or Protected Areas (PA).

## Red List Categories:

Not Evaluated	Data Deficient	Least Concern	Near Threatened	Vulnerable	Endangered	Critically Endangered	Regionally Extinct	Extinct in the Wild
NA	DD	LC	NT	VU	EN	CR	RE	EW

<sup>1</sup>Red List of Vertebrates of Portugal, Red List of Mammals of Mainland Portugal, Red List of Birds of Mainland Portugal, Red List of Invertebrates of Mainland Portugal, Red List of Vascular Flora of Mainland Portugal

**Note:** Road killed species on highways are underlined in the list below.

Group	Species (scientific name)	Portugal Red List Status	IUCN Red List Global Status	IUCN Red List European Status	IUCN Red List Mediterranean Status	Highway	In HNVA or PA (Yes/No)
Amphibians	<i>Pelobates cultripes</i>	LC	VU	VU	Not Evaluated	A2	No
Amphibians	<i>Epidalea calamita</i>	LC	LC	LC	Not Evaluated	A2	No
Birds	<i>Tyto alba</i>	NT	LC	LC	LC	<b><u>A1;A2;A3;A5;A6;A10;A12;A13;A14;A17</u></b>	Yes
Birds	<i>Strix aluco</i>	LC	LC	LC	LC	<b><u>A1;A2;A3;A12;A13;A14;A17</u></b>	Yes
Birds	<i>Streptopelia turtur</i>	NT	VU	VU	Not Evaluated	<b><u>A1</u></b>	No
Birds	<i>Pica pica</i>	LC	LC	LC	Not Evaluated	<b><u>A1</u></b>	No
Birds	<i>Milvus milvus</i>	CR/LC	LC	LC	LC	<b><u>A1;A2;A3;A14;A17</u></b>	Yes
Birds	<i>Milvus migrans</i>	LC	LC	LC	LC	<b><u>A1;A14;A17</u></b>	Yes
Birds	<i>Garrulus glandarius</i>	LC	LC	LC	Not Evaluated	<b><u>A1;A3;A6;A9;A12;A14;A17</u></b>	Yes
Birds	<i>Elanus caeruleus</i>	LC	LC	LC	LC	<b><u>A1</u></b>	No
Birds	<i>Ciconia ciconia</i>	LC	LC	LC	Not Evaluated	<b><u>A1;A2;A3;A6;A10;A12;A13;A14;A17</u></b>	Yes
Birds	<i>Buteo buteo</i>	LC	LC	LC	LC	<b><u>A1;A2;A3;A6;A12;A13;A14;A17</u></b>	Yes
Birds	<i>Bubulcus ibis</i>	VU	LC	LC	Not Evaluated	<b><u>A14</u></b>	No
Birds	<i>Bubo bubo</i>	NT	LC	LC	LC	<b><u>A6;A13</u></b>	Yes
Birds	<i>Athene noctua</i>	LC	LC	LC	LC	<b><u>A1;A3;A4;A5;A13;A14;A17</u></b>	Yes
Birds	<i>Anas platyrhynchos</i>	LC	LC	LC	Not Evaluated	<b><u>A1;A2;A3;A5;A6;A9;A10;A12;A14;A17</u></b>	Yes
Birds	<i>Alectoris rufa</i>	LC	NT	NT	Not Evaluated	<b><u>A2;A6;A14;A17</u></b>	Yes
Birds	<i>Turdus viscivorus</i>	LC	LC	LC	Not Evaluated	A1	No
Birds	<i>Turdus philomelos</i>	LC	LC	LC	Not Evaluated	A1	No
Birds	<i>Fringilla coelebs</i>		LC	LC	Not Evaluated	A2	No
Birds	<i>Columba palumbus</i>		LC	LC	Not Evaluated	A2	No
Birds	<i>Erithacus rubecula</i>	LC	LC	LC	Not Evaluated	A1	No
Birds	<i>Carduelis carduelis</i>		LC	LC	Not Evaluated	A2	No
Birds	<i>Passer domesticus</i>		LC	LC	Not Evaluated	A2	No
Birds	<i>Turdus merula</i>	LC	LC	LC	Not Evaluated	A1;A2	No
Birds	<i>Corvus corone</i>	LC	LC	LC	Not Evaluated	A1	No
Birds	<i>Accipiter nisus</i>	LC	LC	LC	LC	A2	No
Birds	<i>Ardea cinerea</i>	LC	LC	LC	Not Evaluated	A1	No
Birds	<i>Ardea alba</i>	NT	LC	LC	Not Evaluated	A2	Yes

Birds	<i>Gallus gallus</i>		LC	Not Evaluated	Not Evaluated	A2	No
Birds	<i>Gallinula chloropus</i>	LC	LC	LC	Not Evaluated	A1	No
Birds	<i>Rallus aquaticus</i>	LC	LC	LC	Not Evaluated	A1	No
Birds	<i>Parus major</i>		LC	LC	Not Evaluated	A2	No
Birds	<i>Saxicola rubicola</i>		Not Evaluated	Not Evaluated	Not Evaluated	A2	No
Birds	<i>Troglodytes troglodytes</i>	LC	LC	LC	Not Evaluated	A1	No
Birds	<i>Apus apus</i>		LC	NT	Not Evaluated	A2	No
Birds	<i>Cecropis daurica</i>		LC	LC	Not Evaluated	A2	No
Flora	<i>Acacia dealbata</i>	NA	LC	Not Evaluated	Not Evaluated	A1;A2;A14	Yes
Flora	<i>Acacia longifolia</i>	NA	LC	Not Evaluated	Not Evaluated	A14	Yes
Flora	<i>Acacia melanoxylon</i>	NA	Not Evaluated	Not Evaluated	Not Evaluated	A2;A14	Yes
Flora	<i>Achillea ageratum</i>	NA	Not Evaluated	Not Evaluated	Not Evaluated	A1;A2;A14	Yes
Flora	<i>Aegilops triuncialis</i>	NA	LC	LC	Not Evaluated	A6	No
Flora	<i>Agrimonia eupatoria</i>	NA	Not Evaluated	LC	Not Evaluated	A1;A14	Yes
Flora	<i>Agrostis curtisii</i>	NA	Not Evaluated	Not Evaluated	Not Evaluated	A1;A2;A6;A14	Yes
Flora	<i>Ailanthus altissima</i>	NA	LC	Not Evaluated	Not Evaluated	A1	Yes
Flora	<i>Aira caryophyllea</i>	NA	Not Evaluated	Not Evaluated	Not Evaluated	A2;A6;A14	Yes
Flora	<i>Aira cupaniana</i>	NA	Not Evaluated	Not Evaluated	Not Evaluated	A2;A6	Yes
Flora	<i>Allium ampeloprasum</i>	NA	LC	LC	Not Evaluated	A2;A14	Yes
Flora	<i>Allium pruinaum</i>	NA	DD	DD	Not Evaluated	A6	Yes
Flora	<i>Allium vineale</i>	NA	Not Evaluated	LC	Not Evaluated	A2;A6	Yes
Flora	<i>Alnus cordata</i>	NA	LC	LC	Not Evaluated	A14	Yes
Flora	<i>Alnus glutinosa</i>	NA	LC	LC	Not Evaluated	A2	Yes
Flora	<i>Amaranthus deflexus</i>	NA	Not Evaluated	Not Evaluated	Not Evaluated	A2	Yes
Flora	<i>Anacamptis pyramidalis</i>	NA	Not Evaluated	LC	Not Evaluated	A14	Yes
Flora	<i>Anagallis arvensis</i>	NA	Not Evaluated	Not Evaluated	Not Evaluated	A14	Yes
Flora	<i>Anagallis monelli</i>	NA	Not Evaluated	Not Evaluated	Not Evaluated	A2;A6;A14	Yes
Flora	<i>Anarrhinum bellidifolium</i>	NA	Not Evaluated	Not Evaluated	Not Evaluated	A2;A6	Yes
Flora	<i>Anchusa azurea</i>	NA	Not Evaluated	Not Evaluated	Not Evaluated	A2	Yes
Flora	<i>Andryala integrifolia</i>	NA	Not Evaluated	Not Evaluated	Not Evaluated	A1;A2;A6;A14	Yes
Flora	<i>Anthemis arvensis</i>	NA	Not Evaluated	Not Evaluated	Not Evaluated	A2	No
Flora	<i>Aquilegia vulgaris</i>	NA	Not Evaluated	Not Evaluated	Not Evaluated	A14	Yes
Flora	<i>Arbutus unedo</i>	NA	LC	LC	Not Evaluated	A1;A2;A6;A14	Yes
Flora	<i>Arnoseris minima</i>	NA	Not Evaluated	Not Evaluated	Not Evaluated	A2	No

Flora	<i>Arrhenatherum album</i>	NA	Not Evaluated	Not Evaluated	Not Evaluated	A6	No
Flora	<i>Arrhenatherum elatius</i>	NA	Not Evaluated	LC	Not Evaluated	A14	Yes
Flora	<i>Arum italicum</i>	NA	Not Evaluated	Not Evaluated	Not Evaluated	A2;A6;A14	Yes
Flora	<i>Arundo donax</i>	NA	LC	LC	LC	A1;A2;A6;A14	Yes
Flora	<i>Arundo micrantha</i>	NA	Not Evaluated	Not Evaluated	Not Evaluated	A2;A6	No
Flora	<i>Asparagus acutifolius</i>	NA	LC	LC	LC	A1;A2;A6;A14	Yes
Flora	<i>Asparagus aphyllus</i>	NA	LC	LC	LC	A1;A2;A6;A14	Yes
Flora	<i>Asphodelus fistulosus</i>	NA	LC	Not Evaluated	Not Evaluated	A2;A6;A14	Yes
Flora	<i>Asphodelus serotinus</i>	NA	Not Evaluated	Not Evaluated	LC	A1;A2;A6	Yes
Flora	<i>Aster squamatus</i>	NA	Not Evaluated	Not Evaluated	Not Evaluated	A2	No
Flora	<i>Asteriscus spinosus</i>	NA	Not Evaluated	Not Evaluated	Not Evaluated	A2	Yes
Flora	<i>Asterolinon linum-stellatum</i>	NA	Not Evaluated	Not Evaluated	Not Evaluated	A2;A6	Yes
Flora	<i>Avena barbata</i>	NA	Not Evaluated	LC	Not Evaluated	A1;A2;A6;A14	Yes
Flora	<i>Barlia robertiana</i>	NA	Not Evaluated	LC	LC	A1	Yes
Flora	<i>Bartsia trixago</i>	NA	Not Evaluated	Not Evaluated	Not Evaluated	A1;A2;A6;A14	Yes
Flora	<i>Beta maritima</i>	NA	Not Evaluated	Not Evaluated	Not Evaluated	A2	Yes
Flora	<i>Bidens frondosa</i>	NA	LC	Not Evaluated	Not Evaluated	A1	Yes
Flora	<i>Bituminaria bituminosa</i>	NA	Not Evaluated	Not Evaluated	Not Evaluated	A2;A6;A14	Yes
Flora	<i>Blackstonia acuminata</i>	NA	Not Evaluated	Not Evaluated	Not Evaluated	A2;A6;A14	Yes
Flora	<i>Blackstonia perfoliata</i>	NA	Not Evaluated	Not Evaluated	Not Evaluated	A1;A2;A6;A14	Yes
Flora	<i>Brachypodium distachyon</i>	NA	Not Evaluated	Not Evaluated	Not Evaluated	A2;A6;A14	Yes
Flora	<i>Brachypodium phoenicoides</i>	NA	Not Evaluated	Not Evaluated	Not Evaluated	A1;A2;A6;A14	Yes
Flora	<i>Brachypodium sylvaticum</i>	NA	Not Evaluated	Not Evaluated	Not Evaluated	A2	Yes
Flora	<i>Briza maxima</i>	NA	Not Evaluated	Not Evaluated	Not Evaluated	A1;A2;A6;A14	Yes
Flora	<i>Briza minima</i>	NA	Not Evaluated	Not Evaluated	Not Evaluated	A2	Yes
Flora	<i>Briza minor</i>	NA	Not Evaluated	Not Evaluated	Not Evaluated	A2;A6;A14	Yes
Flora	<i>Bromus diandrus</i>	NA	Not Evaluated	Not Evaluated	Not Evaluated	A2;A6	Yes
Flora	<i>Bromus hordeaceus</i>	NA	Not Evaluated	Not Evaluated	Not Evaluated	A2	Yes
Flora	<i>Bromus madritensis</i>	NA	Not Evaluated	Not Evaluated	Not Evaluated	A2;A14	Yes
Flora	<i>Bromus racemosus</i>	NA	Not Evaluated	Not Evaluated	Not Evaluated	A14	Yes
Flora	<i>Bromus rubens</i>	NA	Not Evaluated	Not Evaluated	Not Evaluated	A2	Yes
Flora	<i>Bromus sterilis</i>	NA	Not Evaluated	Not Evaluated	Not Evaluated	A2	Yes
Flora	<i>Bryonia dioica</i>	NA	Not Evaluated	Not Evaluated	Not Evaluated	A2	Yes

Flora	<i>Calamintha nepeta</i>	NA	Not Evaluated	Not Evaluated	Not Evaluated	A2;A6;A14	Yes
Flora	<i>Calendula arvensis</i>	NA	Not Evaluated	Not Evaluated	Not Evaluated	A2;A14	Yes
Flora	<i>Calluna vulgaris</i>	NA	Not Evaluated	LC	Not Evaluated	A1;A2;A6;A14	Yes
Flora	<i>Calystegia silvatica</i>	NA	Not Evaluated	Not Evaluated	Not Evaluated	A14	Yes
Flora	<i>Campanula erinus</i>	NA	Not Evaluated	Not Evaluated	Not Evaluated	A1;A2;A6;A14	Yes
Flora	<i>Campanula rapunculus</i>	NA	Not Evaluated	Not Evaluated	Not Evaluated	A2;A6	Yes
Flora	<i>Cardamine hirsuta</i>	NA	Not Evaluated	Not Evaluated	Not Evaluated	A2	No
Flora	<i>Carduncellus caeruleus</i>	NA	Not Evaluated	Not Evaluated	Not Evaluated	A2	Yes
Flora	<i>Carduus tenuiflorus</i>	NA	Not Evaluated	Not Evaluated	Not Evaluated	A2	Yes
Flora	<i>Carex cuprina</i>	NA	Not Evaluated	Not Evaluated	LC	A14	Yes
Flora	<i>Carex divulsa</i>	NA	Not Evaluated	Not Evaluated	LC	A2;A14	Yes
Flora	<i>Carex flacca</i>	NA	Not Evaluated	Not Evaluated	Not Evaluated	A1;A2;A14	Yes
Flora	<i>Carex hallerana</i>	NA	Not Evaluated	Not Evaluated	Not Evaluated	A1;A2;A6;A14	Yes
Flora	<i>Carex pendula</i>	NA	Not Evaluated	Not Evaluated	LC	A2	Yes
Flora	<i>Carex riparia</i>	NA	LC	LC	LC	A2	Yes
Flora	<i>Carlina corymbosa</i>	NA	Not Evaluated	Not Evaluated	Not Evaluated	A1;A2;A6;A14	Yes
Flora	<i>Carlina gummifera</i>	NA	LC	Not Evaluated	LC	A2	Yes
Flora	<i>Carlina racemosa</i>	NA	Not Evaluated	Not Evaluated	Not Evaluated	A1;A2;A6;A14	Yes
Flora	<i>Carthamus lanatus</i>	NA	Not Evaluated	Not Evaluated	Not Evaluated	A2;A6	Yes
Flora	<i>Casuarina equisetifolia</i>	NA	LC	Not Evaluated	Not Evaluated	A2	No
Flora	<i>Catapodium rigidum</i>	NA	Not Evaluated	Not Evaluated	Not Evaluated	A2	Yes
Flora	<i>Centaurea africana</i>	NA	Not Evaluated	Not Evaluated	Not Evaluated	A2	Yes
Flora	<i>Centaurea calcitrapa</i>	NA	Not Evaluated	Not Evaluated	Not Evaluated	A2	Yes
Flora	<i>Centaurea melitensis</i>	NA	Not Evaluated	Not Evaluated	Not Evaluated	A2	No
Flora	<i>Centaurea pullata</i>	NA	Not Evaluated	Not Evaluated	Not Evaluated	A2;A14	Yes
Flora	<i>Centaurium erythraea</i>	NA	LC	LC	Not Evaluated	A1;A2;A14	Yes
Flora	<i>Centaurium majus</i>	NA	Not Evaluated	Not Evaluated	Not Evaluated	A2;A6;A14	Yes
Flora	<i>Centaurium pulchellum</i>	NA	LC	Not Evaluated	LC	A2	Yes
Flora	<i>Centaurium tenuiflorum</i>	NA	Not Evaluated	Not Evaluated	Not Evaluated	A14	Yes
Flora	<i>Centranthus calcitrapae</i>	NA	Not Evaluated	Not Evaluated	Not Evaluated	A2;A6	Yes
Flora	<i>Cephalanthera longifolia</i>	NA	Not Evaluated	LC	Not Evaluated	A14	Yes
Flora	<i>Chaetonychia cymosa</i>	NA	Not Evaluated	Not Evaluated	Not Evaluated	A6	No
Flora	<i>Chamaemelum fuscatum</i>	NA	Not Evaluated	Not Evaluated	Not Evaluated	A2;A6;A14	Yes
Flora	<i>Chamaesyce maculata</i>	NA	Not Evaluated	Not Evaluated	Not Evaluated	A2;A6;A14	Yes

Flora	<i>Chenopodium album</i>	NA	Not Evaluated	Not Evaluated	Not Evaluated	A2	Yes
Flora	<i>Chondrilla juncea</i>	NA	Not Evaluated	Not Evaluated	Not Evaluated	A2;A6;A14	Yes
Flora	<i>Cichorium intybus</i>	NA	Not Evaluated	LC	Not Evaluated	A1;A2;A14	Yes
Flora	<i>Cirsium vulgare</i>	NA	Not Evaluated	Not Evaluated	Not Evaluated	A14	Yes
Flora	<i>Cistus albidus</i>	NA	Not Evaluated	Not Evaluated	Not Evaluated	A1;A2;A6	Yes
Flora	<i>Cistus crispus</i>	NA	Not Evaluated	Not Evaluated	Not Evaluated	A1;A2;A6;A14	Yes
Flora	<i>Cistus ladanifer ladanifer</i>	NA	Not Evaluated	Not Evaluated	Not Evaluated	A1;A2;A6	No
Flora	<i>Cistus monspeliensis</i>	NA	LC	Not Evaluated	Not Evaluated	A2;A6;A14	Yes
Flora	<i>Cistus psilosepalus</i>	LC	LC	LC	Not Evaluated	A1;A2;A6;A14	Yes
Flora	<i>Cistus salviifolius</i>	NA	Not Evaluated	Not Evaluated	Not Evaluated	A1;A2;A6;A14	Yes
Flora	<i>Cladanthus mixtum</i>	NA	Not Evaluated	Not Evaluated	Not Evaluated	A1;A2	Yes
Flora	<i>Cladanthus mixtus</i>	NA	Not Evaluated	Not Evaluated	Not Evaluated	A2;A6	Yes
Flora	<i>Clinopodium vulgare</i>	NA	Not Evaluated	Not Evaluated	Not Evaluated	A14	Yes
Flora	<i>Coleostephus myconis</i>	NA	Not Evaluated	Not Evaluated	Not Evaluated	A14	Yes
Flora	<i>Conopodium album</i>	NA	Not Evaluated	Not Evaluated	Not Evaluated	A2	No
Flora	<i>Conopodium subcarneum</i>	NA	Not Evaluated	Not Evaluated	Not Evaluated	A2;A6	Yes
Flora	<i>Convolvulus althaeoides</i>	NA	Not Evaluated	Not Evaluated	Not Evaluated	A2	Yes
Flora	<i>Convolvulus arvensis</i>	NA	Not Evaluated	Not Evaluated	Not Evaluated	A1;A2;A6;A14	Yes
Flora	<i>Conyza bonariensis</i>	NA	Not Evaluated	Not Evaluated	Not Evaluated	A1;A2;A6;A14	Yes
Flora	<i>Conyza canadensis</i>	NA	Not Evaluated	Not Evaluated	Not Evaluated	A1;A6;A14	Yes
Flora	<i>Conyza sumatrensis</i>	NA	Not Evaluated	Not Evaluated	Not Evaluated	A2	Yes
Flora	<i>Coronilla glauca</i>	NA	Not Evaluated	Not Evaluated	Not Evaluated	A1;A2;A6;A14	Yes
Flora	<i>Cortaderia selloana</i>	NA	Not Evaluated	Not Evaluated	Not Evaluated	A1;A2;A6;A14	Yes
Flora	<i>Corynephorus canescens</i>	NA	Not Evaluated	Not Evaluated	Not Evaluated	A2;A6	Yes
Flora	<i>Crataegus monogyna</i>	NA	LC	LC	Not Evaluated	A1;A2;A6;A14	Yes
Flora	<i>Crepis capillaris</i>	NA	Not Evaluated	Not Evaluated	Not Evaluated	A2;A6;A14	Yes
Flora	<i>Crepis capillaris</i>	NA	Not Evaluated	Not Evaluated	Not Evaluated	A2;A6;A14	No
Flora	<i>Crepis taraxacifolia</i>	NA	Not Evaluated	Not Evaluated	Not Evaluated	A2;A6;A14	Yes
Flora	<i>Crepis vesicaria taraxacifolia</i>	NA	Not Evaluated	Not Evaluated	Not Evaluated	A2	No
Flora	<i>Crucianella angustifolia</i>	NA	Not Evaluated	Not Evaluated	Not Evaluated	A2;A6	Yes
Flora	<i>Cupressus lusitanica</i>	NA	LC	Not Evaluated	Not Evaluated	A1;A2;A6;A14	Yes
Flora	<i>Cupressus sempervirens</i>	NA	LC	LC	Not Evaluated	A2;A6	Yes
Flora	<i>Cydonia oblonga</i>	NA	LC	Not Evaluated	Not Evaluated	A6	No
Flora	<i>Cynara humilis</i>	NA	Not Evaluated	Not Evaluated	Not Evaluated	A2;A6;A14	Yes

Flora	<i>Cynodon dactylon</i>	LC	Not Evaluated	Not Evaluated	Not Evaluated	A1;A2;A6;A14	Yes
Flora	<i>Cynoglossum creticum</i>	NA	Not Evaluated	Not Evaluated	Not Evaluated	A2	Yes
Flora	<i>Cynosurus echinatus</i>	NA	Not Evaluated	Not Evaluated	Not Evaluated	A2;A6	Yes
Flora	<i>Cyperus eragrostis</i>	NA	LC	Not Evaluated	Not Evaluated	A2;A6;A14	Yes
Flora	<i>Cyperus longus</i>	NA	LC	LC	LC	A2	No
Flora	<i>Cytisus scoparius</i>	NA	Not Evaluated	Not Evaluated	Not Evaluated	A14	Yes
Flora	<i>Cytisus scoparius scoparius</i>	NA	Not Evaluated	Not Evaluated	Not Evaluated	A1	No
Flora	<i>Cytisus striatus</i>	NA	LC	Not Evaluated	Not Evaluated	A14	Yes
Flora	<i>Dactylis glomerata</i>	NA	Not Evaluated	Not Evaluated	Not Evaluated	A1;A2;A6;A14	Yes
Flora	<i>Daphne gnidium</i>	NA	Not Evaluated	Not Evaluated	Not Evaluated	A1;A2;A6;A14	Yes
Flora	<i>Daucus carota carota</i>	NA	LC	LC	Not Evaluated	A1;A2;A6;A14	Yes
Flora	<i>Daucus carota carota</i>	NA	LC	LC	Not Evaluated	A2;A6;A14	No
Flora	<i>Daucus crinitus</i>	NA	LC	LC	Not Evaluated	A2;A14	Yes
Flora	<i>Daucus muricatus</i>	NA	LC	LC	Not Evaluated	A1	Yes
Flora	<i>Digitalis purpurea purpurea</i>	NA	Not Evaluated	LC	Not Evaluated	A1;A14	No
Flora	<i>Digitaria sanguinalis</i>	NA	Not Evaluated	Not Evaluated	Not Evaluated	A2	No
Flora	<i>Dipsacus comosus</i>	NA	Not Evaluated	Not Evaluated	Not Evaluated	A2	Yes
Flora	<i>Dittrichia viscosa viscosa</i>	NA	Not Evaluated	Not Evaluated	Not Evaluated	A1;A2;A6;A14	Yes
Flora	<i>Dittrichia viscosa viscosa</i>	NA	Not Evaluated	Not Evaluated	Not Evaluated	A2;A6;A14	No
Flora	<i>Dorycnium rectum</i>	NA	Not Evaluated	Not Evaluated	Not Evaluated	A2;A14	Yes
Flora	<i>Echium creticum coincyanum</i>	NA	Not Evaluated	Not Evaluated	Not Evaluated	A1;A14	No
Flora	<i>Echium plantagineum</i>	NA	Not Evaluated	Not Evaluated	Not Evaluated	A2;A6	Yes
Flora	<i>Echium rosulatum</i>	NA	Not Evaluated	Not Evaluated	Not Evaluated	A1;A14	Yes
Flora	<i>Echium tuberculatum</i>	NA	Not Evaluated	Not Evaluated	Not Evaluated	A14	Yes
Flora	<i>Elaeoselinum foetidum</i>	NA	Not Evaluated	Not Evaluated	Not Evaluated	A2	Yes
Flora	<i>Elatine macropoda</i>	NA	LC	DD	LC	A2	Yes
Flora	<i>Epilobium brachycarpum</i>	NA	Not Evaluated	Not Evaluated	Not Evaluated	A1	Yes
Flora	<i>Epilobium hirsutum</i>	NA	LC	Not Evaluated	LC	A1	Yes
Flora	<i>Epilobium parviflorum</i>	NA	LC	Not Evaluated	LC	A2;A14	Yes
Flora	<i>Epilobium tetragonum</i>	NA	Not Evaluated	Not Evaluated	LC	A2	No
Flora	<i>Equisetum arvense</i>	NA	LC	LC	Not Evaluated	A1;A2;A14	Yes
Flora	<i>Erica arborea</i>	NA	LC	LC	Not Evaluated	A1;A2;A6;A14	Yes
Flora	<i>Erica australis</i>	NA	Not Evaluated	Not Evaluated	Not Evaluated	A2	No

Flora	<i>Erica ciliaris</i>	NA	Not Evaluated	Not Evaluated	Not Evaluated	A6	No
Flora	<i>Erica cinerea</i>	NA	LC	LC	Not Evaluated	A2;A14	Yes
Flora	<i>Erica scoparia</i>	NA	Not Evaluated	Not Evaluated	Not Evaluated	A6;A14	Yes
Flora	<i>Erica umbellata</i>	NA	Not Evaluated	Not Evaluated	Not Evaluated	A1;A2;A14	Yes
Flora	<i>Erigeron karvinskianus</i>	NA	Not Evaluated	Not Evaluated	Not Evaluated	A14	Yes
Flora	<i>Eriobotrya japonica</i>	NA	Not Evaluated	Not Evaluated	Not Evaluated	A1	Yes
Flora	<i>Erodium cicutarium</i>	NA	Not Evaluated	Not Evaluated	Not Evaluated	A14	Yes
Flora	<i>Erodium malacoides</i>	NA	Not Evaluated	Not Evaluated	Not Evaluated	A6	No
Flora	<i>Eryngium campestre</i>	NA	Not Evaluated	Not Evaluated	Not Evaluated	A1;A2	Yes
Flora	<i>Eryngium pandanifolium</i>	NA	Not Evaluated	Not Evaluated	Not Evaluated	A14	Yes
Flora	<i>Eucalyptus globulus</i>	NA	LC	Not Evaluated	Not Evaluated	A1;A2;A6;A14	Yes
Flora	<i>Eupatorium cannabinum</i>	NA	Not Evaluated	Not Evaluated	Not Evaluated	A14	Yes
Flora	<i>Euphorbia characias</i>	NA	Not Evaluated	Not Evaluated	Not Evaluated	A14	Yes
Flora	<i>Euphorbia characias</i>	NA	Not Evaluated	Not Evaluated	Not Evaluated	A1	No
Flora	<i>Euphorbia helioscopia</i>	NA	Not Evaluated	Not Evaluated	Not Evaluated	A14	Yes
Flora	<i>Euphorbia lathyris</i>	NA	Not Evaluated	Not Evaluated	Not Evaluated	A14	Yes
Flora	<i>Euphorbia segetalis</i>	NA	Not Evaluated	Not Evaluated	Not Evaluated	A2;A6;A14	Yes
Flora	<i>Evax pygmaea</i>	NA	Not Evaluated	Not Evaluated	Not Evaluated	A2	Yes
Flora	<i>Fallopia convolvulus</i>	NA	Not Evaluated	Not Evaluated	Not Evaluated	A1	Yes
Flora	<i>Festuca rubra</i>	NA	Not Evaluated	LC	Not Evaluated	A2;A6	No
Flora	<i>Ficus carica</i>	NA	LC	LC	Not Evaluated	A2;A6	Yes
Flora	<i>Filago pyramidata</i>	NA	Not Evaluated	Not Evaluated	Not Evaluated	A2;A6;A14	Yes
Flora	<i>Foeniculum sanguineum</i>	NA	Not Evaluated	Not Evaluated	Not Evaluated	A14	Yes
Flora	<i>Foeniculum vulgare</i>	NA	Not Evaluated	LC	Not Evaluated	A1;A2;A6;A14	Yes
Flora	<i>Frangula alnus</i>	NA	LC	LC	LC	A14	Yes
Flora	<i>Fraxinus angustifolia</i>	NA	LC	LC	Not Evaluated	A2;A6;A14	Yes
Flora	<i>Fraxinus angustifolia</i>	NA	LC	LC	Not Evaluated	A1;A2	No
Flora	<i>Fraxinus velutina</i>	NA	LC	Not Evaluated	Not Evaluated	A2	Yes
Flora	<i>Fuirena pubescens</i>	NA	LC	LC	LC	A2	Yes
Flora	<i>Galactites tomentosus</i>	NA	Not Evaluated	Not Evaluated	Not Evaluated	A1;A2;A6;A14	Yes
Flora	<i>Gastridium ventricosum</i>	NA	Not Evaluated	Not Evaluated	Not Evaluated	A1;A2;A6;A14	Yes
Flora	<i>Gaudinia fragilis</i>	NA	Not Evaluated	Not Evaluated	Not Evaluated	A2;A6	Yes
Flora	<i>Genista tournefortii</i>	NA	Not Evaluated	Not Evaluated	Not Evaluated	A14	Yes

Flora	<i>Genista triacanthos</i>	NA	Not Evaluated	Not Evaluated	Not Evaluated	A2;A6;A14	Yes
Flora	<i>Geropogon hybridus</i>	NA	Not Evaluated	Not Evaluated	Not Evaluated	A2	Yes
Flora	<i>Gladiolus illyricus</i>	NA	Not Evaluated	Not Evaluated	Not Evaluated	A1;A2	Yes
Flora	<i>Glandora prostrata</i>	NA	Not Evaluated	Not Evaluated	Not Evaluated	A14	Yes
Flora	<i>Gynandrisis sisyrinchium</i>	NA	Not Evaluated	Not Evaluated	Not Evaluated	A2	Yes
Flora	<i>Halimium calycinum</i>	NA	Not Evaluated	Not Evaluated	Not Evaluated	A2;A6	Yes
Flora	<i>Halimium halimifolium</i>	NA	Not Evaluated	Not Evaluated	Not Evaluated	A2;A6	Yes
Flora	<i>Halimium lasianthum</i>	NA	Not Evaluated	Not Evaluated	Not Evaluated	A6;A14	Yes
Flora	<i>Halimium ocymoides</i>	NA	Not Evaluated	Not Evaluated	Not Evaluated	A2;A6	Yes
Flora	<i>Halimium umbellatum verticillatum</i>	LC	Not Evaluated	Not Evaluated	Not Evaluated	A2;A6	No
Flora	<i>Hedera hibernica</i>	NA	Not Evaluated	Not Evaluated	Not Evaluated	A14	Yes
Flora	<i>Hedera maderensis</i>	NA	Not Evaluated	Not Evaluated	Not Evaluated	A14	Yes
Flora	<i>Hedypnois rhagadioloides</i>	NA	Not Evaluated	Not Evaluated	Not Evaluated	A2;A14	Yes
Flora	<i>Helianthemum ledifolium</i>	NA	Not Evaluated	Not Evaluated	Not Evaluated	A2	Yes
Flora	<i>Helichrysum luteoalbum</i>	NA	Not Evaluated	Not Evaluated	Not Evaluated	A2	No
Flora	<i>Helichrysum stoechas</i>	NA	Not Evaluated	LC	Not Evaluated	A2;A6	Yes
Flora	<i>Helichrysum stoechas</i>	NA	Not Evaluated	LC	Not Evaluated	A1;A2;A14	No
Flora	<i>Heliotropium europaeum</i>	NA	Not Evaluated	Not Evaluated	Not Evaluated	A2;A6	No
Flora	<i>Helminthotheca echioides</i>	NA	Not Evaluated	Not Evaluated	Not Evaluated	A2;A14	Yes
Flora	<i>Helminthotheca spinifera</i>	NA	Not Evaluated	Not Evaluated	Not Evaluated	A14	Yes
Flora	<i>Helosciadium nodiflorum</i>	NA	LC	LC	LC	A2	No
Flora	<i>Himantoglossum robertianum</i>	NA	Not Evaluated	LC	LC	A2;A14	Yes
Flora	<i>Hirschfeldia incana</i>	NA	Not Evaluated	Not Evaluated	Not Evaluated	A1;A2	Yes
Flora	<i>Holcus lanatus</i>	NA	Not Evaluated	Not Evaluated	Not Evaluated	A1;A2;A6;A14	Yes
Flora	<i>Holcus mollis</i>	NA	Not Evaluated	Not Evaluated	Not Evaluated	A2;A6;A14	Yes
Flora	<i>Hordeum murinum</i>	NA	LC	LC	Not Evaluated	A14	Yes
Flora	<i>Hyacinthoides vicentina</i>	LC	Not Evaluated	Not Evaluated	Not Evaluated	A2	Yes
Flora	<i>Hyparrhenia hirta</i>	NA	Not Evaluated	Not Evaluated	Not Evaluated	A1;A2;A6;A14	Yes
Flora	<i>Hyparrhenia sinaica</i>	NA	Not Evaluated	Not Evaluated	Not Evaluated	A2;A6;A14	Yes
Flora	<i>Hypericum perforatum</i>	NA	Not Evaluated	Not Evaluated	Not Evaluated	A1;A2;A6;A14	Yes
Flora	<i>Hypericum tomentosum</i>	NA	Not Evaluated	Not Evaluated	Not Evaluated	A2;A6;A14	Yes
Flora	<i>Hypochaeris glabra</i>	NA	Not Evaluated	Not Evaluated	Not Evaluated	A2;A6	Yes
Flora	<i>Hypochaeris radicata</i>	NA	Not Evaluated	Not Evaluated	Not Evaluated	A1;A2;A6;A14	Yes

Flora	<i>Iris germanica</i>	NA	Not Evaluated	Not Evaluated	Not Evaluated	A2	No
Flora	<i>Iris subbiflora</i>	NA	Not Evaluated	Not Evaluated	Not Evaluated	A2;A14	Yes
Flora	<i>Jasione montana</i>	NA	Not Evaluated	Not Evaluated	Not Evaluated	A2;A6	Yes
Flora	<i>Jasminum fruticans</i>	NA	Not Evaluated	Not Evaluated	Not Evaluated	A1;A2	Yes
Flora	<i>Juncus acutiflorus</i>	NA	Not Evaluated	LC	LC	A2	No
Flora	<i>Juncus articulatus</i>	NA	LC	LC	LC	A2	No
Flora	<i>Juncus bufonius</i>	NA	LC	LC	LC	A2;A14	Yes
Flora	<i>Juncus capitatus</i>	NA	Not Evaluated	Not Evaluated	LC	A2	No
Flora	<i>Juncus conglomeratus</i>	NA	LC	Not Evaluated	LC	A14	Yes
Flora	<i>Juncus effusus</i>	NA	LC	LC	LC	A1;A2;A14	Yes
Flora	<i>Juncus maritimus</i>	NA	Not Evaluated	Not Evaluated	LC	A14	Yes
Flora	<i>Juncus valvatus</i>	NT	DD	VU	DD	A14	Yes
Flora	<i>Kickxia lanigera</i>	NA	Not Evaluated	Not Evaluated	Not Evaluated	A2	Yes
Flora	<i>Klasea integrifolia monardii</i>	NA	Not Evaluated	Not Evaluated	Not Evaluated	A2;A6	No
Flora	<i>Lactuca serriola</i>	NA	Not Evaluated	LC	Not Evaluated	A1;A2;A6	Yes
Flora	<i>Lactuca virosa</i>	NA	Not Evaluated	DD	Not Evaluated	A2	Yes
Flora	<i>Lagurus ovatus</i>	NA	Not Evaluated	Not Evaluated	Not Evaluated	A1;A2;A6;A14	Yes
Flora	<i>Lantana camara</i>	NA	Not Evaluated	Not Evaluated	Not Evaluated	A2	No
Flora	<i>Lathyrus hirsutus</i>	NA	LC	LC	Not Evaluated	A14	Yes
Flora	<i>Lathyrus sylvestris</i>	NA	LC	LC	Not Evaluated	A14	Yes
Flora	<i>Laurus nobilis</i>	NA	LC	LC	Not Evaluated	A1;A14	Yes
Flora	<i>Lavandula pedunculata</i>	NA	Not Evaluated	Not Evaluated	Not Evaluated	A2;A6;A14	Yes
Flora	<i>Lavandula pedunculata</i>	NA	Not Evaluated	Not Evaluated	Not Evaluated	A1;A2;A6;A14	No
Flora	<i>Lavandula stoechas</i>	NA	Not Evaluated	Not Evaluated	Not Evaluated	A2;A6;A14	Yes
Flora	<i>Lavatera cretica</i>	NA	Not Evaluated	Not Evaluated	Not Evaluated	A1;A2;A14	Yes
Flora	<i>Leontodon taraxacoides</i>	NA	Not Evaluated	Not Evaluated	Not Evaluated	A1;A2;A6;A14	Yes
Flora	<i>Leontodon tuberosus</i>	NA	Not Evaluated	Not Evaluated	Not Evaluated	A1;A2	Yes
Flora	<i>Linum bienne</i>	NA	Not Evaluated	Not Evaluated	Not Evaluated	A2;A6;A14	Yes
Flora	<i>Linum setaceum</i>	NA	Not Evaluated	Not Evaluated	Not Evaluated	A2	Yes
Flora	<i>Linum strictum</i>	NA	Not Evaluated	Not Evaluated	Not Evaluated	A2;A6;A14	Yes
Flora	<i>Linum trigynum</i>	NA	Not Evaluated	Not Evaluated	Not Evaluated	A2	Yes
Flora	<i>Linum trigynum tenue</i>	NA	Not Evaluated	Not Evaluated	Not Evaluated	A2	No
Flora	<i>Linum trigynum trigynum</i>	NA	Not Evaluated	Not Evaluated	Not Evaluated	A14	No

Flora	<i>Logfia gallica</i>	NA	Not Evaluated	Not Evaluated	Not Evaluated	A2	No
Flora	<i>Lolium rigidum</i>	NA	Not Evaluated	LC	Not Evaluated	A6	Yes
Flora	<i>Lomelosia simplex</i>	NA	Not Evaluated	Not Evaluated	Not Evaluated	A2	Yes
Flora	<i>Lonicera etrusca</i>	NA	Not Evaluated	Not Evaluated	Not Evaluated	A14	Yes
Flora	<i>Lonicera implexa</i>	NA	Not Evaluated	Not Evaluated	Not Evaluated	A1;A2	Yes
Flora	<i>Lonicera periclymenum</i>	NA	Not Evaluated	Not Evaluated	Not Evaluated	A2;A14	Yes
Flora	<i>Lotus castellanus</i>	NA	Not Evaluated	Not Evaluated	Not Evaluated	A1;A2;A14	Yes
Flora	<i>Lotus corniculatus</i>	NA	Not Evaluated	LC	Not Evaluated	A2;A14	Yes
Flora	<i>Lotus pedunculatus</i>	NA	Not Evaluated	LC	Not Evaluated	A2;A14	Yes
Flora	<i>Lycopus europaeus</i>	NA	LC	LC	LC	A2	Yes
Flora	<i>Lysimachia vulgaris</i>	NA	LC	LC	LC	A2	Yes
Flora	<i>Lythrum hyssopifolia</i>	NA	LC	LC	LC	A2;A6;A14	Yes
Flora	<i>Lythrum junceum</i>	NA	LC	LC	LC	A2;A14	Yes
Flora	<i>Lythrum salicaria</i>	NA	LC	LC	LC	A14	Yes
Flora	<i>Lythrum thymifolia</i>	NA	LC	LC	LC	A2;A14	Yes
Flora	<i>Malus domestica</i>	NA	Not Evaluated	Not Evaluated	Not Evaluated	A1	Yes
Flora	<i>Malva hispanica</i>	NA	Not Evaluated	Not Evaluated	Not Evaluated	A2	Yes
Flora	<i>Margotia gummifera</i>	NA	Not Evaluated	Not Evaluated	Not Evaluated	A2;A6;A14	Yes
Flora	<i>Medicago polymorpha</i>	NA	Not Evaluated	LC	Not Evaluated	A2	No
Flora	<i>Medicago sativa</i>	NA	LC	LC	Not Evaluated	A2	Yes
Flora	<i>Melica ciliata</i>	NA	Not Evaluated	Not Evaluated	Not Evaluated	A14	Yes
Flora	<i>Melilotus indicus</i>	NA	Not Evaluated	Not Evaluated	Not Evaluated	A14	Yes
Flora	<i>Melilotus officinalis</i>	NA	Not Evaluated	LC	Not Evaluated	A14	Yes
Flora	<i>Mentha pulegium</i>	NA	LC	LC	LC	A2;A14	Yes
Flora	<i>Mentha suaveolens</i>	NA	LC	Not Evaluated	LC	A2;A14	Yes
Flora	<i>Mercurialis ambigua</i>	NA	Not Evaluated	Not Evaluated	Not Evaluated	A14	Yes
Flora	<i>Micromeria graeca</i>	NA	Not Evaluated	Not Evaluated	Not Evaluated	A2;A6;A14	Yes
Flora	<i>Micromeria graeca</i>	NA	Not Evaluated	Not Evaluated	Not Evaluated	A2;A6;A14	No
Flora	<i>Micropyrum patens</i>	NA	Not Evaluated	Not Evaluated	Not Evaluated	A6;A14	Yes
Flora	<i>Milium vernale</i>	NA	Not Evaluated	Not Evaluated	Not Evaluated	A2	No
Flora	<i>Misopates calycinum</i>	NA	Not Evaluated	Not Evaluated	Not Evaluated	A6	No
Flora	<i>Misopates orontium</i>	NA	Not Evaluated	Not Evaluated	Not Evaluated	A2	Yes
Flora	<i>Molinia caerulea</i>	NA	Not Evaluated	Not Evaluated	LC	A2;A14	Yes
Flora	<i>Muscari comosum</i>	NA	Not Evaluated	Not Evaluated	Not Evaluated	A2	No

Flora	<i>Muscari negletum</i>	NA	Not Evaluated	Not Evaluated	Not Evaluated	A6	No
Flora	<i>Myrtus communis</i>	NA	LC	LC	Not Evaluated	A1;A2;A6;A14	Yes
Flora	<i>Nerium oleander</i>	NA	LC	LC	Not Evaluated	A2;A6;A14	Yes
Flora	<i>Oenanthe crocata</i>	NA	Not Evaluated	LC	LC	A2;A6;A14	Yes
Flora	<i>Oenothera glazioviana</i>	NA	Not Evaluated	Not Evaluated	Not Evaluated	A2;A14	Yes
Flora	<i>Oenothera rosea</i>	NA	Not Evaluated	Not Evaluated	Not Evaluated	A1;A14	Yes
Flora	<i>Oenothera stricta</i>	NA	Not Evaluated	Not Evaluated	Not Evaluated	A2;A14	Yes
Flora	<i>Olea europaea sylvestris</i>	NA	Not Evaluated	DD	Not Evaluated	A1;A2;A6;A14	No
Flora	<i>Ononis natrix</i>	NA	Not Evaluated	Not Evaluated	Not Evaluated	A2	Yes
Flora	<i>Ononis ramosissima</i>	NA	LC	Not Evaluated	Not Evaluated	A2	Yes
Flora	<i>Ononis spinosa</i>	NA	Not Evaluated	LC	Not Evaluated	A1;A2	Yes
Flora	<i>Ophrys apifera</i>	NA	Not Evaluated	LC	Not Evaluated	A1;A2;A14	Yes
Flora	<i>Ophrys speculum lusitanica</i>	NA	Not Evaluated	Not Evaluated	Not Evaluated	A14	No
Flora	<i>Orchis italica</i>	NA	Not Evaluated	LC	Not Evaluated	A1;A14	Yes
Flora	<i>Origanum vulgare virens</i>	NA	Not Evaluated	LC	Not Evaluated	A1;A2;A14	No
Flora	<i>Orlaya daucooides</i>	NA	Not Evaluated	Not Evaluated	Not Evaluated	A2	Yes
Flora	<i>Ornithopus compressus</i>	NA	Not Evaluated	Not Evaluated	Not Evaluated	A2	No
Flora	<i>Ornithopus pinnatus</i>	NA	Not Evaluated	Not Evaluated	Not Evaluated	A6	Yes
Flora	<i>Orobanche minor</i>	NA	Not Evaluated	Not Evaluated	Not Evaluated	A2;A6	Yes
Flora	<i>Osyris alba</i>	NA	Not Evaluated	Not Evaluated	Not Evaluated	A14	Yes
Flora	<i>Pallenis spinosa</i>	NA	Not Evaluated	Not Evaluated	Not Evaluated	A1;A2	No
Flora	<i>Panicum repens</i>	NA	LC	LC	Not Evaluated	A2;A6;A14	Yes
Flora	<i>Parentucellia latifolia</i>	NA	Not Evaluated	Not Evaluated	Not Evaluated	A2;A6	Yes
Flora	<i>Parentucellia viscosa</i>	NA	Not Evaluated	Not Evaluated	Not Evaluated	A2;A6;A14	Yes
Flora	<i>Parietaria judaica</i>	NA	Not Evaluated	Not Evaluated	Not Evaluated	A1;A2;A14	Yes
Flora	<i>Paronychia argentea</i>	NA	Not Evaluated	Not Evaluated	Not Evaluated	A2;A6	Yes
Flora	<i>Paspalum dilatatum</i>	NA	Not Evaluated	Not Evaluated	Not Evaluated	A14	Yes
Flora	<i>Paspalum distichum</i>	NA	LC	Not Evaluated	Not Evaluated	A1;A2;A6;A14	Yes
Flora	<i>Pennisetum setaceum</i>	NA	LC	Not Evaluated	Not Evaluated	A2	Yes
Flora	<i>Petrorrhagia nanteuillii</i>	NA	Not Evaluated	Not Evaluated	Not Evaluated	A2;A6;A14	Yes
Flora	<i>Petrorrhagia nantelii</i>	NA	Not Evaluated	Not Evaluated	Not Evaluated	A2	No
Flora	<i>Phagnalon rupestre</i>	NA	Not Evaluated	Not Evaluated	Not Evaluated	A1;A2;A6;A14	Yes
Flora	<i>Phagnalon saxatile</i>	NA	Not Evaluated	Not Evaluated	Not Evaluated	A2;A6;A14	Yes
Flora	<i>Phalaris aquatica</i>	NA	Not Evaluated	LC	Not Evaluated	A14	Yes

Flora	<i>Phalaris coeruleascens</i>	NA	Not Evaluated	Not Evaluated	LC	A2;A6	Yes
Flora	<i>Phillyrea angustifolia</i>	NA	Not Evaluated	Not Evaluated	Not Evaluated	A1;A2;A6	Yes
Flora	<i>Phillyrea latifolia</i>	NA	LC	Not Evaluated	Not Evaluated	A1	Yes
Flora	<i>Phragmites australis</i>	NA	LC	LC	Not Evaluated	A2;A14	Yes
Flora	<i>Phytolacca heterotepala</i>	NA	Not Evaluated	Not Evaluated	Not Evaluated	A14	Yes
Flora	<i>Picris echioides</i>	NA	Not Evaluated	Not Evaluated	Not Evaluated	A1;A14	Yes
Flora	<i>Pimpinella villosa</i>	NA	Not Evaluated	Not Evaluated	Not Evaluated	A2	Yes
Flora	<i>Pinus halepensis</i>	NA	LC	LC	Not Evaluated	A2;A14	Yes
Flora	<i>Pinus pinaster</i>	NA	LC	LC	Not Evaluated	A1;A2;A6;A14	Yes
Flora	<i>Pinus pinea</i>	NA	LC	LC	Not Evaluated	A1;A2;A6	Yes
Flora	<i>Piptatherum miliaceum</i>	NA	Not Evaluated	Not Evaluated	Not Evaluated	A1;A2;A6;A14	Yes
Flora	<i>Pistacia lentiscus</i>	NA	LC	LC	Not Evaluated	A1;A2;A6;A14	Yes
Flora	<i>Pittosporum tobira</i>	NA	Not Evaluated	Not Evaluated	Not Evaluated	A2	Yes
Flora	<i>Pittosporum undulatum</i>	NA	Not Evaluated	Not Evaluated	Not Evaluated	A2	Yes
Flora	<i>Plantago afra</i>	NA	Not Evaluated	LC	Not Evaluated	A2	Yes
Flora	<i>Plantago bellardii</i>	NA	Not Evaluated	Not Evaluated	Not Evaluated	A2;A6	Yes
Flora	<i>Plantago coronopus</i>	NA	Not Evaluated	Not Evaluated	Not Evaluated	A2;A6	Yes
Flora	<i>Plantago lagopus</i>	NA	Not Evaluated	Not Evaluated	Not Evaluated	A1;A2;A6	Yes
Flora	<i>Plantago lanceolata</i>	NA	Not Evaluated	LC	Not Evaluated	A1;A2;A6;A14	Yes
Flora	<i>Platanus hispanica</i>	NA	Not Evaluated	Not Evaluated	Not Evaluated	A2;A14	Yes
Flora	<i>Poa annua</i>	NA	LC	Not Evaluated	Not Evaluated	A6	No
Flora	<i>Polycarpon tetraphyllum</i>	NA	Not Evaluated	Not Evaluated	Not Evaluated	A2;A6;A14	Yes
Flora	<i>Polygonum aviculare</i>	NA	Not Evaluated	LC	Not Evaluated	A2	Yes
Flora	<i>Polygonum persicaria</i>	NA	LC	Not Evaluated	Not Evaluated	A2	No
Flora	<i>Polypogon monspeliensis</i>	NA	LC	Not Evaluated	LC	A2;A6	Yes
Flora	<i>Polypogon viridis</i>	NA	LC	Not Evaluated	Not Evaluated	A1	Yes
Flora	<i>Populus alba</i>	NA	LC	Not Evaluated	Not Evaluated	A2	Yes
Flora	<i>Populus nigra</i>	NA	DD	DD	Not Evaluated	A1;A2;A6;A14	Yes
Flora	<i>Prunella vulgaris</i>	NA	LC	LC	Not Evaluated	A1;A2;A14	Yes
Flora	<i>Prunus domestica</i>	NA	DD	DD	Not Evaluated	A14	Yes
Flora	<i>Prunus persica</i>	NA	Not Evaluated	Not Evaluated	Not Evaluated	A1;A14	Yes
Flora	<i>Psilurus incurvus</i>	NA	Not Evaluated	Not Evaluated	Not Evaluated	A6	No
Flora	<i>Pteridium aquilinum</i>	NA	Not Evaluated	LC	Not Evaluated	A1, A2;A6	Yes
Flora	<i>Pteridium aquilinum</i>	NA	Not Evaluated	Not Evaluated	Not Evaluated	A1	No

Flora	<i>Pterocephalidium diandrum</i>	NA	Not Evaluated	Not Evaluated	Not Evaluated	A2;A6	Yes
Flora	<i>Pterospartum tridentatum</i>	NA	Not Evaluated	Not Evaluated	Not Evaluated	A2;A6;A14	Yes
Flora	<i>Pulicaria arabica hispanica</i>	NA	LC	Not Evaluated	Not Evaluated	A2;A6	No
Flora	<i>Pulicaria dysenterica</i>	NA	Not Evaluated	Not Evaluated	Not Evaluated	A14	Yes
Flora	<i>Pulicaria odora</i>	NA	Not Evaluated	Not Evaluated	Not Evaluated	A2;A6;A14	Yes
Flora	<i>Pulicaria paludosa</i>	NA	Not Evaluated	Not Evaluated	Not Evaluated	A2;A6	Yes
Flora	<i>Pycnocomon intermedium</i>	NA	Not Evaluated	Not Evaluated	Not Evaluated	A2	No
Flora	<i>Pyracantha angustifolia</i>	NA	LC	Not Evaluated	Not Evaluated	A2	Yes
Flora	<i>Pyracantha coccinea</i>	NA	Not Evaluated	Not Evaluated	Not Evaluated	A2;A6;A14	No
Flora	<i>Pyrus bourgaeana</i>	NA	LC	LC	Not Evaluated	A2;A6	Yes
Flora	<i>Quercus coccifera</i>	NA	LC	LC	Not Evaluated	A1;A2;A6;A14	Yes
Flora	<i>Quercus coccifera rivasmartinezii</i>	LC	LC	Not Evaluated	Not Evaluated	A1	No
Flora	<i>Quercus faginea broteroi</i>	NA	LC	LC	Not Evaluated	A1;A2;A14	No
Flora	<i>Quercus palustris</i>	NA	LC	Not Evaluated	Not Evaluated	A2	No
Flora	<i>Quercus robur</i>	NA	LC	LC	Not Evaluated	A1;A14	Yes
Flora	<i>Quercus rotundifolia</i>	NA	LC	LC	Not Evaluated	A2;A6	Yes
Flora	<i>Quercus suber</i>	NA	LC	LC	Not Evaluated	A1;A2;A6;A14	Yes
Flora	<i>Ranunculus repens</i>	NA	Not Evaluated	LC	LC	A2;A14	Yes
Flora	<i>Ranunculus tripartitus</i>	NA	Not Evaluated	Not Evaluated	Not Evaluated	A2	No
Flora	<i>Raphanus raphanistrum</i>	NA	Not Evaluated	LC	Not Evaluated	A2	Yes
Flora	<i>Rapistrum rugosum</i>	NA	Not Evaluated	Not Evaluated	Not Evaluated	A2;A14	Yes
Flora	<i>Reichardia intermedia</i>	NA	Not Evaluated	Not Evaluated	Not Evaluated	A2;A6;A14	Yes
Flora	<i>Reichardia picroides</i>	NA	Not Evaluated	Not Evaluated	Not Evaluated	A1;A2;A6;A14	Yes
Flora	<i>Retama sphaerocarpa</i>	NA	Not Evaluated	Not Evaluated	Not Evaluated	A1;A2;A6;A14	Yes
Flora	<i>Rhamnus alaternus</i>	NA	LC	LC	Not Evaluated	A1;A2;A14	Yes
Flora	<i>Robinia pseudoacacia</i>	NA	LC	Not Evaluated	Not Evaluated	A1	Yes
Flora	<i>Rorippa nasturtium-aquaticum</i>	NA	Not Evaluated	Not Evaluated	Not Evaluated	A6	No
Flora	<i>Rosa canina</i>	NA	Not Evaluated	LC	Not Evaluated	A1;A2;A6;A14	Yes
Flora	<i>Rosa sempervirens</i>	NA	Not Evaluated	Not Evaluated	Not Evaluated	A1;A14	Yes
Flora	<i>Rosmarinus officinalis</i>	NA	Not Evaluated	Not Evaluated	Not Evaluated	A2;A6	Yes
Flora	<i>Rubia peregrina</i>	NA	Not Evaluated	Not Evaluated	Not Evaluated	A2;A14	Yes
Flora	<i>Rubus ulmifolius</i>	NA	Not Evaluated	Not Evaluated	Not Evaluated	A1;A2;A6;A14	Yes
Flora	<i>Rumex acetosa</i>	NA	Not Evaluated	Not Evaluated	Not Evaluated	A14	Yes

Flora	<i>Rumex acetosella angiocarpus</i>	NA	Not Evaluated	Not Evaluated	Not Evaluated	A1	No
Flora	<i>Rumex bucephalophorus</i>	NA	Not Evaluated	Not Evaluated	Not Evaluated	A2	Yes
Flora	<i>Rumex conglomeratus</i>	NA	Not Evaluated	Not Evaluated	LC	A14	Yes
Flora	<i>Rumex crispus</i>	NA	Not Evaluated	LC	LC	A1;A2;A14	Yes
Flora	<i>Rumex obtusifolius</i>	NA	Not Evaluated	Not Evaluated	Not Evaluated	A2	Yes
Flora	<i>Rumex pulcher</i>	NA	Not Evaluated	Not Evaluated	LC	A2	Yes
Flora	<i>Ruscus aculeatus</i>	LC	Not Evaluated	LC	Not Evaluated	A14	Yes
Flora	<i>Salix alba</i>	NA	LC	LC	Not Evaluated	A2;A14	Yes
Flora	<i>Salix atrocinerea</i>	NA	LC	LC	LC	A1;A2;A6;A14	Yes
Flora	<i>Salix babylonica</i>	NA	DD	Not Evaluated	Not Evaluated	A1	Yes
Flora	<i>Salix neotricha</i>	NA	Not Evaluated	Not Evaluated	Not Evaluated	A2;A14	Yes
Flora	<i>Salix salviifolia</i>	NA	LC	LC	Not Evaluated	A2;A6	Yes
Flora	<i>Salix salviifolia australis</i>	NA	LC	LC	Not Evaluated	A2;A6	No
Flora	<i>Salvia argentea</i>	NA	Not Evaluated	Not Evaluated	Not Evaluated	A2	Yes
Flora	<i>Salvia verbenaca</i>	NA	Not Evaluated	Not Evaluated	Not Evaluated	A2	Yes
Flora	<i>Sanguisorba hybrida</i>	NA	Not Evaluated	Not Evaluated	Not Evaluated	A2;A6;A14	Yes
Flora	<i>Sanguisorba verrucosa</i>	NA	Not Evaluated	Not Evaluated	Not Evaluated	A1;A2;A6;A14	Yes
Flora	<i>Saxifraga granulata</i>	NA	Not Evaluated	Not Evaluated	Not Evaluated	A14	Yes
Flora	<i>Scabiosa atropurpurea</i>	NA	Not Evaluated	Not Evaluated	Not Evaluated	A1;A2;A6;A14	Yes
Flora	<i>Schoenoplectus lacustris</i>	NA	LC	LC	Not Evaluated	A6	No
Flora	<i>Schoenus nigricans</i>	NA	LC	Not Evaluated	Not Evaluated	A2	Yes
Flora	<i>Scilla autumnalis</i>	NA	Not Evaluated	Not Evaluated	Not Evaluated	A2;A6	No
Flora	<i>Scilla monophyllos</i>	NA	Not Evaluated	Not Evaluated	LC	A2;A6	Yes
Flora	<i>Scirpoides holoschoenus</i>	NA	LC	Not Evaluated	Not Evaluated	A1;A2;A6;A14	Yes
Flora	<i>Scolymus hispanicus</i>	NA	Not Evaluated	Not Evaluated	Not Evaluated	A2	Yes
Flora	<i>Scorpiurus muricatus</i>	NA	Not Evaluated	Not Evaluated	Not Evaluated	A14	Yes
Flora	<i>Scorpiurus sulcatus</i>	NA	Not Evaluated	Not Evaluated	Not Evaluated	A2	Yes
Flora	<i>Scorzonera angustifolia</i>	NA	Not Evaluated	Not Evaluated	Not Evaluated	A2	Yes
Flora	<i>Scrophularia auriculata</i>	NA	Not Evaluated	Not Evaluated	LC	A2	Yes
Flora	<i>Sedum album</i>	NA	Not Evaluated	Not Evaluated	Not Evaluated	A2;A14	Yes
Flora	<i>Sedum forsterianum</i>	NA	Not Evaluated	Not Evaluated	Not Evaluated	A14	Yes
Flora	<i>Selaginella denticulata</i>	NA	LC	LC	LC	A14	Yes
Flora	<i>Senecio jacobaea</i>	NA	Not Evaluated	Not Evaluated	Not Evaluated	A2;A6;A14	Yes
Flora	<i>Serapias lingua</i>	NA	Not Evaluated	LC	Not Evaluated	A2;A6;A14	Yes

Flora	<i>Serapias strictiflora</i>	NA	Not Evaluated	Not Evaluated	Not Evaluated	A2	Yes
Flora	<i>Sesamoides purpurascens</i>	NA	Not Evaluated	Not Evaluated	Not Evaluated	A2	No
Flora	<i>Setaria adhaerens</i>	NA	Not Evaluated	Not Evaluated	Not Evaluated	A6	No
Flora	<i>Setaria pumila</i>	NA	Not Evaluated	Not Evaluated	Not Evaluated	A1;A14	Yes
Flora	<i>Sherardia arvensis</i>	NA	Not Evaluated	Not Evaluated	Not Evaluated	A14	Yes
Flora	<i>Sideritis hirsuta</i>	NA	Not Evaluated	Not Evaluated	Not Evaluated	A2	Yes
Flora	<i>Sideritis romana</i>	NA	Not Evaluated	Not Evaluated	Not Evaluated	A2	Yes
Flora	<i>Silene colorata</i>	NA	Not Evaluated	Not Evaluated	Not Evaluated	A2;A6	Yes
Flora	<i>Silene gallica</i>	NA	Not Evaluated	Not Evaluated	Not Evaluated	A2;A6;A14	Yes
Flora	<i>Silene inaperta</i>	NA	Not Evaluated	Not Evaluated	Not Evaluated	A2	Yes
Flora	<i>Silene inaperta inaperta</i>	NA	Not Evaluated	Not Evaluated	Not Evaluated	A2	No
Flora	<i>Silene latifolia</i>	NA	Not Evaluated	Not Evaluated	Not Evaluated	A2;A14	Yes
Flora	<i>Silene portensis</i>	NA	Not Evaluated	Not Evaluated	Not Evaluated	A2;A6	No
Flora	<i>Silybum marianum</i>	NA	LC	LC	Not Evaluated	A2	Yes
Flora	<i>Sisymbrium officinale</i>	NA	Not Evaluated	LC	Not Evaluated	A2;A6;A14	Yes
Flora	<i>Smilax aspera</i>	NA	Not Evaluated	LC	Not Evaluated	A1;A2;A14	Yes
Flora	<i>Smyrniium olusatrum</i>	NA	Not Evaluated	Not Evaluated	Not Evaluated	A14	Yes
Flora	<i>Solanum nigrum</i>	NA	Not Evaluated	Not Evaluated	Not Evaluated	A1;A2;A6	Yes
Flora	<i>Sonchus oleraceus</i>	NA	Not Evaluated	Not Evaluated	Not Evaluated	A2;A6;A14	Yes
Flora	<i>Sorghum halepense</i>	NA	Not Evaluated	Not Evaluated	Not Evaluated	A2	Yes
Flora	<i>Spartium junceum</i>	NA	Not Evaluated	Not Evaluated	Not Evaluated	A1;A14	Yes
Flora	<i>Sporobolus indicus</i>	NA	LC	Not Evaluated	Not Evaluated	A14	Yes
Flora	<i>Stachys arvensis</i>	NA	Not Evaluated	Not Evaluated	Not Evaluated	A2	Yes
Flora	<i>Stauracanthus genistoides</i>	NA	Not Evaluated	Not Evaluated	Not Evaluated	A2;A6	Yes
Flora	<i>Stipa capensis</i>	NA	Not Evaluated	Not Evaluated	Not Evaluated	A2;A6	Yes
Flora	<i>Stipa gigantea</i>	NA	Not Evaluated	Not Evaluated	Not Evaluated	A2;A6	Yes
Flora	<i>Symphotrichum squamatum</i>	NA	Not Evaluated	Not Evaluated	Not Evaluated	A2;A6;A14	Yes
Flora	<i>Tamarix africana</i>	NA	LC	LC	Not Evaluated	A2;A6	Yes
Flora	<i>Tamus communis</i>	NA	Not Evaluated	Not Evaluated	Not Evaluated	A1;A2;A14	Yes
Flora	<i>Tanacetum annuum</i>	NA	Not Evaluated	Not Evaluated	Not Evaluated	A1	Yes
Flora	<i>Teucrium fruticans</i>	NA	Not Evaluated	Not Evaluated	Not Evaluated	A2	No
Flora	<i>Thapsia minor</i>	NA	Not Evaluated	Not Evaluated	Not Evaluated	A14	Yes
Flora	<i>Thapsia villosa</i>	NA	Not Evaluated	Not Evaluated	Not Evaluated	A2;A6	Yes
Flora	<i>Thrinicia hispida</i>	NA	Not Evaluated	Not Evaluated	Not Evaluated	A2;A6;A14	Yes

Flora	<i>Thrinicia tuberosa</i>	NA	Not Evaluated	Not Evaluated	Not Evaluated	A14	Yes
Flora	<i>Thymus capitellatus</i>	LC	NT	NT	Not Evaluated	A2;A6	Yes
Flora	<i>Tolpis barbata</i>	NA	Not Evaluated	Not Evaluated	Not Evaluated	A2;A6;A14	Yes
Flora	<i>Tolpis umbellata</i>	NA	Not Evaluated	Not Evaluated	Not Evaluated	A2;A6	No
Flora	<i>Torilis arvensis</i>	NA	Not Evaluated	Not Evaluated	Not Evaluated	A1;A2;A6;A14	Yes
Flora	<i>Torilis nodosa</i>	NA	Not Evaluated	Not Evaluated	Not Evaluated	A2	Yes
Flora	<i>Trifolium angustifolium</i>	NA	LC	LC	Not Evaluated	A1;A2;A6;A14	Yes
Flora	<i>Trifolium arvense</i>	NA	Not Evaluated	LC	Not Evaluated	A2;A6;A14	Yes
Flora	<i>Trifolium arvensis</i>	NA	Not Evaluated	Not Evaluated	Not Evaluated	A2	Yes
Flora	<i>Trifolium bocconeii</i>	NA	Not Evaluated	Not Evaluated	Not Evaluated	A2	Yes
Flora	<i>Trifolium campestre</i>	LC	Not Evaluated	Not Evaluated	Not Evaluated	A2;A6;A14	Yes
Flora	<i>Trifolium cherleri</i>	NA	Not Evaluated	Not Evaluated	Not Evaluated	A6	Yes
Flora	<i>Trifolium fragiferum</i>	NA	Not Evaluated	Not Evaluated	Not Evaluated	A2;A6;A14	Yes
Flora	<i>Trifolium glomeratum</i>	NA	Not Evaluated	Not Evaluated	Not Evaluated	A2	No
Flora	<i>Trifolium lappaceum</i>	NA	Not Evaluated	Not Evaluated	Not Evaluated	A2;A6	Yes
Flora	<i>Trifolium michelianum</i>	NA	Not Evaluated	Not Evaluated	Not Evaluated	A14	Yes
Flora	<i>Trifolium pratensis</i>	NA	Not Evaluated	Not Evaluated	Not Evaluated	A14	Yes
Flora	<i>Trifolium resupinatum</i>	NA	Not Evaluated	LC	Not Evaluated	A2	No
Flora	<i>Trifolium scabrum</i>	NA	LC	Not Evaluated	Not Evaluated	A2	Yes
Flora	<i>Trifolium stellatum</i>	NA	Not Evaluated	Not Evaluated	Not Evaluated	A2;A6	Yes
Flora	<i>Trifolium tomentosum</i>	NA	Not Evaluated	Not Evaluated	Not Evaluated	A14	Yes
Flora	<i>Trifolium vesiculosum</i>	NA	Not Evaluated	LC	Not Evaluated	A6	No
Flora	<i>Triticum aestivum</i>	NA	Not Evaluated	Not Evaluated	Not Evaluated	A6	Yes
Flora	<i>Tuberaria guttata</i>	NA	Not Evaluated	Not Evaluated	Not Evaluated	A2;A6;A14	Yes
Flora	<i>Tuberaria lignosa</i>	NA	Not Evaluated	Not Evaluated	Not Evaluated	A2;A6;A14	Yes
Flora	<i>Tulipa sylvestris australis</i>	NA	Not Evaluated	Not Evaluated	Not Evaluated	A2;A6;A14	No
Flora	<i>Typha domingensis</i>	NA	LC	LC	LC	A2;A14	Yes
Flora	<i>Ulex australis welwitschianus</i>	LC	Not Evaluated	Not Evaluated	Not Evaluated	A2;A6	No
Flora	<i>Ulex europaeus latebracteatus</i>	LC	LC	LC	Not Evaluated	A1;A14	No
Flora	<i>Ulex jussiaei</i>	NA	Not Evaluated	Not Evaluated	Not Evaluated	A1;A14	Yes
Flora	<i>Ulex micranthus</i>	NA	LC	LC	Not Evaluated	A1;A14	Yes
Flora	<i>Ulex minor</i>	NA	LC	LC	Not Evaluated	A1;A2;A6;A14	Yes
Flora	<i>Ulmus minor</i>	NA	DD	DD	Not Evaluated	A1	Yes

Flora	<i>Urginea maritima</i>	NA	Not Evaluated	Not Evaluated	Not Evaluated	A1;A2;A6;A14	Yes
Flora	<i>Urospermum picroides</i>	NA	Not Evaluated	Not Evaluated	Not Evaluated	A1;A2;A6;A14	Yes
Flora	<i>Verbascum sinuatum</i>	NA	Not Evaluated	Not Evaluated	Not Evaluated	A1;A2;A6;A14	Yes
Flora	<i>Verbascum thapsus</i>	NA	Not Evaluated	LC	Not Evaluated	A2;A6	Yes
Flora	<i>Verbascum virgatum</i>	NA	Not Evaluated	Not Evaluated	Not Evaluated	A1;A2;A14	Yes
Flora	<i>Verbena incompta</i>	NA	Not Evaluated	Not Evaluated	Not Evaluated	A1;A14	Yes
Flora	<i>Verbena officinalis</i>	NA	Not Evaluated	LC	LC	A2	Yes
Flora	<i>Viburnum tinus</i>	NA	LC	LC	Not Evaluated	A1;A2;A6;A14	Yes
Flora	<i>Vicia lathyroides</i>	NA	LC	LC	Not Evaluated	A14	Yes
Flora	<i>Vicia sativa</i>	NA	LC	LC	Not Evaluated	A2;A14	Yes
Flora	<i>Vinca difformis</i>	NA	Not Evaluated	Not Evaluated	Not Evaluated	A14	Yes
Flora	<i>Vitis labrusca</i>	NA	Not Evaluated	Not Evaluated	Not Evaluated	A2	Yes
Flora	<i>Vitis vinifera</i>	NA	LC	LC	Not Evaluated	A1;A14	Yes
Flora	<i>Vulpia alopecuros</i>	NA	Not Evaluated	Not Evaluated	Not Evaluated	A2;A6	Yes
Flora	<i>Vulpia geniculata</i>	NA	Not Evaluated	Not Evaluated	Not Evaluated	A6	Yes
Flora	<i>Vulpia myuros</i>	NA	Not Evaluated	Not Evaluated	Not Evaluated	A2;A6;A14	Yes
Invertebrates	<i>Aconurella prolixa</i>		Not Evaluated	Not Evaluated	Not Evaluated	A2	No
Invertebrates	<i>Acrobasis bithynella</i>		Not Evaluated	Not Evaluated	Not Evaluated	A2	No
Invertebrates	<i>Acronicta rumicis</i>		Not Evaluated	Not Evaluated	Not Evaluated	A2	No
Invertebrates	<i>Acyrtosiphon pisum</i>		Not Evaluated	Not Evaluated	Not Evaluated	A2	No
Invertebrates	<i>Agrilus laticornis</i>		Not Evaluated	Not Evaluated	Not Evaluated	A2	No
Invertebrates	<i>Akis genei</i>		Not Evaluated	Not Evaluated	Not Evaluated	A2	No
Invertebrates	<i>Amphimallon solstitiale</i>		Not Evaluated	Not Evaluated	Not Evaluated	A2	No
Invertebrates	<i>Anacampsis scintillella</i>		Not Evaluated	Not Evaluated	Not Evaluated	A2	No
Invertebrates	<i>Anacridium aegyptium</i>		Not Evaluated	LC	Not Evaluated	A2	No
Invertebrates	<i>Aphis craccivora</i>		Not Evaluated	Not Evaluated	Not Evaluated	A2	No
Invertebrates	<i>Aphis nasturtii</i>		Not Evaluated	Not Evaluated	Not Evaluated	A2	No
Invertebrates	<i>Aphis spiraeicola</i>		Not Evaluated	Not Evaluated	Not Evaluated	A2	No
Invertebrates	<i>Aphrodes bicincta</i>		Not Evaluated	Not Evaluated	Not Evaluated	A2	No
Invertebrates	<i>Apis mellifera</i>		Not Evaluated	DD	Not Evaluated	A2	No
Invertebrates	<i>Autographa gamma</i>		Not Evaluated	Not Evaluated	Not Evaluated	A2	No
Invertebrates	<i>Bemisia tabaci</i>		Not Evaluated	Not Evaluated	Not Evaluated	A2	No
Invertebrates	<i>Berberomeloe castuo</i>		Not Evaluated	Not Evaluated	Not Evaluated	A2	No
Invertebrates	<i>Bourletiella arvalis</i>		Not Evaluated	Not Evaluated	Not Evaluated	A2	No

Invertebrates	<i>Bradysia trivittata</i>	Not Evaluated	Not Evaluated	Not Evaluated	A2	No
Invertebrates	<i>Cacoecimorpha pronubana</i>	Not Evaluated	Not Evaluated	Not Evaluated	A2	No
Invertebrates	<i>Calamobius filum</i>	Not Evaluated	Not Evaluated	Not Evaluated	A2	No
Invertebrates	<i>Calliphora vicina</i>	Not Evaluated	Not Evaluated	Not Evaluated	A2	No
Invertebrates	<i>Calliptamus barbarus</i>	Not Evaluated	LC	Not Evaluated	A2	No
Invertebrates	<i>Chorthippus vagans</i>	Not Evaluated	LC	Not Evaluated	A2	No
Invertebrates	<i>Coenosia tigrina</i>	Not Evaluated	Not Evaluated	Not Evaluated	A2	No
Invertebrates	<i>Colaspidema barbarum</i>	Not Evaluated	Not Evaluated	Not Evaluated	A2	No
Invertebrates	<i>Colaspidema dufouri</i>	Not Evaluated	Not Evaluated	Not Evaluated	A2	No
Invertebrates	<i>Cricotopus bicinctus</i>	Not Evaluated	Not Evaluated	Not Evaluated	A2	No
Invertebrates	<i>Cryptocephalus rugicollis</i>	Not Evaluated	Not Evaluated	Not Evaluated	A2	No
Invertebrates	<i>Cyclophora puppillaria</i>	Not Evaluated	Not Evaluated	Not Evaluated	A2	No
Invertebrates	<i>Delia platura</i>	Not Evaluated	Not Evaluated	Not Evaluated	A2	No
Invertebrates	<i>Dicladispa testacea</i>	Not Evaluated	Not Evaluated	Not Evaluated	A2	No
Invertebrates	<i>Diplazon laetatorius</i>	Not Evaluated	Not Evaluated	Not Evaluated	A2	No
Invertebrates	<i>Dociostaurus jagoi</i>	Not Evaluated	LC	Not Evaluated	A2	No
Invertebrates	<i>Dolichosoma lineare</i>	Not Evaluated	Not Evaluated	Not Evaluated	A2	No
Invertebrates	<i>Dorcus parallelipipedus</i>	Not Evaluated	LC	Not Evaluated	A2	No
Invertebrates	<i>Dysgonia algira</i>	Not Evaluated	Not Evaluated	Not Evaluated	A2	No
Invertebrates	<i>Ectobius panzeri</i>	Not Evaluated	Not Evaluated	Not Evaluated	A2	No
Invertebrates	<i>Ethmia bipunctella</i>	Not Evaluated	Not Evaluated	Not Evaluated	A2	No
Invertebrates	<i>Euserica lucipeta</i>	Not Evaluated	Not Evaluated	Not Evaluated	A2	No
Invertebrates	<i>Euserica mutata</i>	Not Evaluated	Not Evaluated	Not Evaluated	A2	No
Invertebrates	<i>Euspilapteryx auroguttella</i>	Not Evaluated	Not Evaluated	Not Evaluated	A2	No
Invertebrates	<i>Graphopsocus cruciatus</i>	Not Evaluated	Not Evaluated	Not Evaluated	A2	No
Invertebrates	<i>Gryllus bimaculatus</i>	Not Evaluated	LC	Not Evaluated	A2	No
Invertebrates	<i>Helina evecta</i>	Not Evaluated	Not Evaluated	Not Evaluated	A2	No
Invertebrates	<i>Heterotoma meriopterum</i>	Not Evaluated	Not Evaluated	Not Evaluated	A2	No
Invertebrates	<i>Hoplocallis picta</i>	Not Evaluated	Not Evaluated	Not Evaluated	A2	No
Invertebrates	<i>Hydrophorus praecox</i>	Not Evaluated	Not Evaluated	Not Evaluated	A2	No
Invertebrates	<i>Hypera arator</i>	Not Evaluated	Not Evaluated	Not Evaluated	A2	No
Invertebrates	<i>Infurcitinea atrifasciella</i>	Not Evaluated	Not Evaluated	Not Evaluated	A2	No
Invertebrates	<i>Lampyris iberica</i>	Not Evaluated	Not Evaluated	Not Evaluated	A2	No
Invertebrates	<i>Laodelphax striatellus</i>	Not Evaluated	Not Evaluated	Not Evaluated	A2	No

Invertebrates	<i>Licinus punctulatus</i>		Not Evaluated	Not Evaluated	Not Evaluated	A2	No
Invertebrates	<i>Liposcelis bostrychophila</i>		Not Evaluated	Not Evaluated	Not Evaluated	A2	No
Invertebrates	<i>Lispe nana</i>		Not Evaluated	Not Evaluated	Not Evaluated	A2	No
Invertebrates	<i>Loboptera decipiens</i>		Not Evaluated	Not Evaluated	Not Evaluated	A2	No
Invertebrates	<i>Lymantria dispar</i>		Not Evaluated	Not Evaluated	Not Evaluated	A2	No
Invertebrates	<i>Mantis religiosa</i>	LC	LC	Not Evaluated	Not Evaluated	A2	No
Invertebrates	<i>Melanophthalma fuscipennis</i>		Not Evaluated	Not Evaluated	Not Evaluated	A2	No
Invertebrates	<i>Micromus angulatus</i>		Not Evaluated	Not Evaluated	Not Evaluated	A2	No
Invertebrates	<i>Microtendipes pedellus</i>		Not Evaluated	Not Evaluated	Not Evaluated	A2	No
Invertebrates	<i>Musca domestica</i>		Not Evaluated	Not Evaluated	Not Evaluated	A2	No
Invertebrates	<i>Muscina levida</i>		Not Evaluated	Not Evaluated	Not Evaluated	A2	No
Invertebrates	<i>Muscina pascuorum</i>		Not Evaluated	Not Evaluated	Not Evaluated	A2	No
Invertebrates	<i>Mythimna unipuncta</i>		Not Evaluated	Not Evaluated	Not Evaluated	A2	No
Invertebrates	<i>Neomyia cornicina</i>		Not Evaluated	Not Evaluated	Not Evaluated	A2	No
Invertebrates	<i>Neriere clathrata</i>		Not Evaluated	Not Evaluated	Not Evaluated	A2	No
Invertebrates	<i>Oedipoda caerulescens</i>		Not Evaluated	LC	Not Evaluated	A2	No
Invertebrates	<i>Omocestus raymondi</i>		Not Evaluated	LC	Not Evaluated	A2	No
Invertebrates	<i>Paraceras melis</i>		Not Evaluated	Not Evaluated	Not Evaluated	A2	No
Invertebrates	<i>Pezotettix giornae</i>		Not Evaluated	LC	Not Evaluated	A2	No
Invertebrates	<i>Phalangium opilio</i>		Not Evaluated	Not Evaluated	Not Evaluated	A2	No
Invertebrates	<i>Physomeloe corallifer</i>		Not Evaluated	Not Evaluated	Not Evaluated	A2	No
Invertebrates	<i>Phytoseiulus persimilis</i>		Not Evaluated	Not Evaluated	Not Evaluated	A2	No
Invertebrates	<i>Pimelia chrysomeloides</i>		Not Evaluated	Not Evaluated	Not Evaluated	A2	No
Invertebrates	<i>Pimelia evorensis</i>		Not Evaluated	Not Evaluated	Not Evaluated	A2	No
Invertebrates	<i>Plodia interpunctella</i>		Not Evaluated	Not Evaluated	Not Evaluated	A2	No
Invertebrates	<i>Psilogaster loti</i>		Not Evaluated	Not Evaluated	Not Evaluated	A2	No
Invertebrates	<i>Psychoda alternata</i>		Not Evaluated	Not Evaluated	Not Evaluated	A2	No
Invertebrates	<i>Pulex irritans</i>		Not Evaluated	Not Evaluated	Not Evaluated	A2	No
Invertebrates	<i>Rhagoxycha fulva</i>		Not Evaluated	Not Evaluated	Not Evaluated	A2	No
Invertebrates	<i>Scolopendra cingulata</i>		Not Evaluated	Not Evaluated	Not Evaluated	A2	No
Invertebrates	<i>Sepedophilus immaculatus</i>		Not Evaluated	Not Evaluated	Not Evaluated	A2	No
Invertebrates	<i>Sitona lineatus</i>		Not Evaluated	Not Evaluated	Not Evaluated	A2	No
Invertebrates	<i>Stenarella domator</i>		Not Evaluated	Not Evaluated	Not Evaluated	A2	No
Invertebrates	<i>Stevenia deceptoria</i>		Not Evaluated	Not Evaluated	Not Evaluated	A2	No

Invertebrates	<i>Tapinoma ibericum</i>		Not Evaluated	Not Evaluated	Not Evaluated	A2	No
Invertebrates	<i>Tebenna micalis</i>		Not Evaluated	Not Evaluated	Not Evaluated	A2	No
Invertebrates	<i>Tettigonia viridissima</i>		Not Evaluated	LC	Not Evaluated	A2	No
Invertebrates	<i>Thaumatomyia notata</i>		Not Evaluated	Not Evaluated	Not Evaluated	A2	No
Invertebrates	<i>Therioaphis trifolii</i>		Not Evaluated	Not Evaluated	Not Evaluated	A2	No
Invertebrates	<i>Thrips tabaci</i>		Not Evaluated	Not Evaluated	Not Evaluated	A2	No
Invertebrates	<i>Thysanoplusia orichalcea</i>		Not Evaluated	Not Evaluated	Not Evaluated	A2	No
Invertebrates	<i>Tinagma balteolella</i>		Not Evaluated	Not Evaluated	Not Evaluated	A2	No
Invertebrates	<i>Tingissus guadarramense</i>		Not Evaluated	Not Evaluated	Not Evaluated	A2	No
Invertebrates	<i>Tortricodes alternella</i>		Not Evaluated	Not Evaluated	Not Evaluated	A2	No
Invertebrates	<i>Toya propinqua</i>		Not Evaluated	Not Evaluated	Not Evaluated	A2	No
Invertebrates	<i>Trichodectes canis</i>		Not Evaluated	Not Evaluated	Not Evaluated	A2	No
Invertebrates	<i>Trichoplusia ni</i>		Not Evaluated	Not Evaluated	Not Evaluated	A2	No
Invertebrates	<i>Trichopsocus dalii</i>		Not Evaluated	Not Evaluated	Not Evaluated	A2	No
Invertebrates	<i>Tylopsis lilifolia</i>		Not Evaluated	LC	Not Evaluated	A2	No
Invertebrates	<i>Sympetrum fonscolombii</i>		LC	LC	Not Evaluated	A2	No
Invertebrates	<i>Papilio machaon</i>		Not Evaluated	LC	LC	A2	No
Mammals	<i>Vulpes vulpes</i>	LC	LC	LC	LC	<b><u>A1;A2;A3;A4;A5;A6;A9;A10;A12;A13;A14;A17</u></b>	Yes
Mammals	<i>Sus scrofa</i>	LC	LC	LC	LC	<b><u>A1;A2;A3;A4;A6;A9;A10;A12;A13;A14;A17</u></b>	Yes
Mammals	<i>Sciurus vulgaris</i>	LC	LC	LC	Not Evaluated	<b><u>A1;A2;A17</u></b>	Yes
Mammals	<i>Oryctolagus cuniculus</i>	VU	EN	NT	Not Evaluated	<b><u>A1;A2;A3;A4;A5;A6;A9;A12;A14;A17</u></b>	Yes
Mammals	<i>Neovison vison</i>	NA	LC	Não aplicável	Not Evaluated	<b><u>A1;A14</u></b>	No
Mammals	<i>Mustela putorius</i>	EN	LC	LC	LC	<b><u>A1;A2;A3;A6</u></b>	Yes
Mammals	<i>Mustela nivalis</i>	LC	LC	LC	LC	<b><u>A1;A3;A6;A14</u></b>	Yes
Mammals	<i>Meles meles</i>	LC	LC	LC	LC	<b><u>A1;A2;A3;A4;A6;A10;A13;A14;A17</u></b>	Yes
Mammals	<i>Martes martes</i>	VU	LC	LC	LC	<b><u>A2</u></b>	Yes
Mammals	<i>Martes foina</i>	LC	LC	LC	LC	<b><u>A2;A3;A6;A12;A13</u></b>	Yes
Mammals	<i>Lutra lutra</i>	LC	NT	NT	NT	<b><u>A1;A2;A4;A6;A13;A14;A17</u></b>	Yes
Mammals	<i>Lepus granatensis</i>	VU	LC	LC	Not Evaluated	<b><u>A2;A5;A6;A12;A13;A17</u></b>	Yes
Mammals	<i>Herpestes ichneumon</i>	LC	LC	LC	LC	<b><u>A1;A2;A5;A6;A9;A12;A13;A14;A17</u></b>	Yes
Mammals	<i>Genetta genetta</i>	LC	LC	LC	LC	<b><u>A1;A2;A3;A4;A5;A6;A13;A14;A17</u></b>	Yes

Mammals	<i>Erinaceus europaeus</i>	LC	NT	NT	LC	<b><u>A1;A2;A3;A4;A5;A6</u></b> ;A9;A12lag; <b><u>A14;A17</u></b>	Yes
Mammals	<i>Cervus elaphus</i>	LC	LC	LC	LC	<b><u>A1</u></b>	Yes
Mammals	<i>Capreolus capreolus</i>	LC	LC	LC	LC	<b><u>A1</u></b>	Yes
Mammals	<i>Talpa occidentalis</i>	LC	LC	LC	LC	A2	No
Mammals	<i>Apodemus sylvaticus</i>	LC	LC	LC	LC	A2	No
Mammals	<i>Arvicola sapidus</i>	VU	NT	NT	Not Evaluated	A1;A2	No
Mammals	<i>Mus spretus</i>	LC	LC	LC	LC	A2	No
Mammals	<i>Microtus cabreræ</i>	VU	NT	NT	NT	A2	No
Mammals	<i>Crocidura russula</i>	LC	LC	LC	LC	A2	No
Mammals	<i>Suncus etruscus</i>	LC	LC	LC	Not Evaluated	A2	No
Mammals	<i>Myotis myotis</i>	VU	LC	LC	LC	A2	No
Mammals	<i>Plecotus austriacus</i>	NT	NT	NT	Not Evaluated	A2	No
Mammals	<i>Felis silvestris</i>	EN	LC	Not Evaluated	Not Evaluated	A1;A2	Yes
Reptiles	<i>Podarcis virescens</i>	LC	LC	LC	LC	A2	No

# Annex III – Implementation of act4nature Portugal commitments

## Brisa Group's act4nature Portugal Commitments

		Implementation	Source/Page
1.	Public dissemination in 2024 of the Brisa Group's Nature Positive strategy, through the website, the Integrated Report and sector seminars.	Executed	Publication on the Brisa Group website: <a href="https://grupobrisa.pt/sustentabilidade/compromisso/">https://grupobrisa.pt/sustentabilidade/compromisso/</a> Brisa Group Integrated Report 2024: 84-88 Biodiversity Report 2024: 10-18
2.	By December 2024, communicate the Brisa Group's Nature Positive strategy to 100% of employees and material service providers (with a material impact on action for nature within the scope of the Brisa Group's activity).	Executed	Brisa Group Integrated Report 2024: 84-88 Intranet news item dated 10 January 2024 Service providers - Biodiversity Report 2024: 29
3.	By January 2025, update and make available online the Brisa Group's Procurement Policy, which now includes requirements for preventing and minimizing impacts on biodiversity, defined with the help of consultants	Executed	Implemented through the <a href="#">Brisa Group Supplier Code of Conduct</a> (page 7) and the BCR Manual of Good Practices for the Management of Biodiversity and Natural and Semi-natural Ecosystems.
4.	Implement the measures set out in the Nature Positive Action Plan 2030 in the 2023-2028 period, with the aim of 2028 (a specific Action Plan will be drawn up annually): i. achieve level 3 of the internal biodiversity action KPI (0 to 4), in the High Nature Value Areas (HNVA) located in the semi-natural areas covered by BCR highways; ii. apply good biodiversity and ecosystem management practices to linear infrastructures in the remaining areas (not HVNA) located in the semi-natural areas covered by BCR highways.	Under development	Current Report: 11-21
5.	Monitoring the implementation of the Nature Positive Action Plan for the period 2023-2028, including indicators of: i. initial characterization of the intervention areas and validation of the potential baseline (2022) (assessed for 100% of the 5 km segments of BCR highways); ii. implementation of actions carried out in relation to the plan; iii. results (after ca. 12 months), effects (after ca. 18 months) and impacts (after ca. 3 and 5 years) in terms of biodiversity (fauna and flora), habitats (habitats, landscape mosaic and permeability), risk (invasives and fire) and ecosystem services (e.g. carbon storage and sequestration, water regulation and prevention of soil erosion - assessment on a macro scale (total area).	Implemented annually	Current Report: 11-21
6.	By December 2024, train 100% of plant maintenance service providers to implement the measures proposed in the Nature Positive Action Plan in accordance with good biodiversity and ecosystem management practices in linear infrastructures, helping 100% of trainees to acquire new knowledge.	Executed	Biodiversity Report of 2024: 10-18
7.	By December 2024, train 100% of the workers involved in monitoring the implementation of the Nature Positive Action Plan (in areas such as selective control of vegetation, management and control of invasive flora, promotion of native flora and monitoring the mortality of fauna by trampling), helping 100% of trainees to acquire new knowledge.	Executed	Integrated Report 2023: 122
8.	Disclose annually, from 2024 onwards, the actions implemented by the Brisa Group to manage biodiversity and ecosystems, and the respective results, as established in the Nature Positive Strategy 2030 and the respective Action and Monitoring Plans, as well as the annual implementation of act4nature Portugal commitments. This will be disclosed through the website, the Integrated Report and sectoral seminars.	Implemented annually	<a href="#">Integrated Reports of 2024 and 2025</a> Current Report: 11-21

*Grupo* **Brisa** 

Brisa Auto-Estradas de Portugal, S.A.  
Quinta da Torre da Aguilha, Edifício Brisa  
2785-599 São Domingos de Rana  
PORTUGAL

